



# **MANAGEMENT OF SNAKE BITE**



**AUGUST 2017**



**Ministry of Health & Family Welfare  
Government of India**







# STANDARD TREATMENT GUIDELINES

## MANAGEMENT OF SNAKE BITE

AUGUST 2017

Ministry of Health & Family Welfare  
Government of India

©2017

Ministry of Health and Family Welfare  
Government of India, Nirman Bhawan  
New Delhi-110 011

Reproduction of any excerpts from this documents does not require permission from the publisher so long it is verbatim, is meant for free distribution and the source is acknowledged.

ISBN: 978-93-82655-21-3

Design by: Macro Graphics Pvt. Ltd. ([www.macrographics.com](http://www.macrographics.com))

# TABLE OF CONTENT

<b>Introduction</b>	<b>1</b>
<b>Incidence of Snake Bite in India</b>	<b>3</b>
<b>When to Suspect/Recognize Snakebite</b>	<b>5</b>
<b>Recommendations</b>	<b>7</b>
First AID Measures	7
Sign & Symptoms	10
Assessment	18
Lab Investigations	21
<b>Anti Snake Venom (ASV) Therapy</b>	<b>27</b>
Anti snake venom (ASV)	27
Anti snake venom (ASV) DOSE	28
Monitoring of Patients and Precautions During ASV Administration	29
ASV Dose in Pregnancy	30
ASV Dose in Children	30
ASV Dosage in Victims Requiring Life Saving Surgery	30
Repeat Dose of ASV	30
Victims who Arrive Late	31
ASV Reaction	31

Premedication with Adrenaline (Epinephrine)	32
Treatment of Early ASV Reaction	32
<b>Management Neurotoxic (Neuroparalytic) Envenomation</b>	<b>35</b>
Atropine Neostigmine (AN) Dosage Schedule	36
<b>Management of Vasculotoxic Snakebite</b>	<b>37</b>
Volume Replacement in Snake Bite	37
Forced Alkaline Diuresis (FAD)	38
Detection and Management of Hyperkalemia	38
Management of severe acidosis	39
Indications for dialysis	39
In case of Shock, myocardial damage	40
<b>Management of Severe Local Envenoming</b>	<b>41</b>
<b>Recovery Phase</b>	<b>43</b>
<b>Other Measures</b>	<b>45</b>
Surgical Procedures in Snakebite	45
<b>Discharge</b>	<b>49</b>
Follow-up	49
Rehabilitation	49
<b>Referral Criteria</b>	<b>51</b>
Instructions While Referring	52
<b>Guideline Development Process</b>	<b>55</b>
<b>References</b>	<b>57</b>
<b>Annexure 1: Snake Bite Examination Performa</b>	<b>61</b>
<b>Annexure 2: Snake Bite Management Different Levels of Healthcare</b>	<b>65</b>
<b>Quality Standards for Management of Snakebite</b>	<b>71</b>

# INTRODUCTION

Snakebite is an acute life threatening time limiting medical emergency. It is a preventable public health hazard often faced by rural population in tropical and subtropical countries with heavy rainfall and humid climate. There are more than 2000 species of snakes in the world and about 300 species are found in India out of which 52 are venomous. The venomous snakes found in India belong to three families Elapidae, Viperidae and hydrophinae (Sea Snakes). The most common Indian elapids are *Naja naja* (Indian Cobra) and *Bungarus caeruleus* (Indian Krait), *Daboia russalii* (Russells' Viper) and *Echis carinatus* (Saw scaled viper) (Alirol et al 2010). Clinical effects of envenoming by same species of snake are almost similar except a few regional variations. Kraits are active during night hours, often biting a person sleeping on floor bed. Maximum Viper and Cobra bites occur during the day or early darkness, while watering the plantation or walking bare foot in grown grass or soybean crops.

Although total number of bites may be more than 5-6 lakhs but only 30% are venomous bites. On the basis of Million Death Study), non-fatal bites may be as high as 1.4 million per year. Though snakebite is a life threatening centuries old condition, it was included in the list of neglected tropical diseases (Warrell and WHO 2009; Bawaskar HS 2014). With its triad of high mortality, high disability, and substantial psychological morbidity, snake bite warrants high priority research (lancet 2015).

Currently, treatment quality is highly varied, ranging from good quality in some areas, to very poor quality treatment in others. The high fatality due to Krait bite is attributed to the non-availability of anti snake venom (ASV), delayed and inappropriate administration of ASV, lack of standard protocol for management and inexperienced doctors and non-availability of ventilator or bag and valve (Bawaskar et al 2008). In India, there has always been a crisis of antivenom

supply (Bawaskar HS and Bawaskar PH 2001). On one hand there is shortage of ASV but on the other hand scarce ASV is being wasted due to excessive dosage of ASV in the absence of a Standard Treatment Guideline. Victims are not only misdiagnosed as - abdominal colic, and vomiting due to indigestion, appendicitis, stroke, head injury, ischemic heart disease, food poisoning, trismus, hysteria and Guillain-Barre´ syndrome but also subjected to unnecessary investigations including MRI scans of the brain and lumbar puncture thus causing undue delay in ASV therapy. Delayed administration of ASV or waiting until victim develops systemic manifestations i.e., a 6 h wait results in systemic envenoming and high fatality (Bawaskar et al 2008). Morbidity and mortality depends on the age and size of victim (children receive larger envenomation relative to body size), co-morbid conditions (elderly patients succumb more easily to snake venom) as well as nature of first aid given. Factors not contributing to outcome are size of the snake and time of bite (day/night)



# INCIDENCE OF SNAKE BITE IN INDIA

There is a huge gap between the number of snakebite deaths reported from direct survey and official data. Only 7.23% snakebite deaths were officially reported (Majumdar, 2014 and Mohapatra 2011). Earlier hospital based reports estimated about 1,300 to 50,000 annual deaths from snakebites per year in India. Mohapatra et al, 2011, reported direct estimates from a national mortality survey of 1.1 million homes in 2001–03. The study found 562 deaths (0.47% of total deaths) were assigned to snakebites, mostly in rural areas, and more commonly among males than females and peaking at ages 15–29. This proportion represents about 45,900 annual snakebite deaths nationally or an annual age-standardized rate of 4.1/100,000, with higher rates in rural areas (5.4) and with the highest rate in the state of Andhra Pradesh (6.2). Annual snakebite deaths were greatest in the states of Uttar Pradesh (8,700), Andhra Pradesh (5,200), and Bihar (4,500). Other Indian states with high incidence of snakebites cases are Tamil Nadu, West Bengal, Maharashtra and Kerala. Because a large proportion of global totals of snakebites arise from India, global snakebite totals might also be underestimated (Mohapatra et al 2011).

In a retrospective study conducted in one district of West Bengal only 22.19% of the snakebite victims attended the hospitals (Majumder et al, 2014). This is because even today most of the victims initially approach traditional healers for treatment and many are not even registered in the hospital. Singh et al reported among the snakebite victims, about 60.76% received first aid at the site of incident, and 20.25% of them sought hospital care after consulting the traditional healers (ozhas, or mantrik and tandrik). Time lapsed for seeking hospital treatment was less than 4 h in 55.69% of the cases and more than 12 h in 7.59% of the cases. Most (41.79%) patients were frightened, but no local or systemic symptoms had appeared when they reported the emergency (Singh A et al 2015).



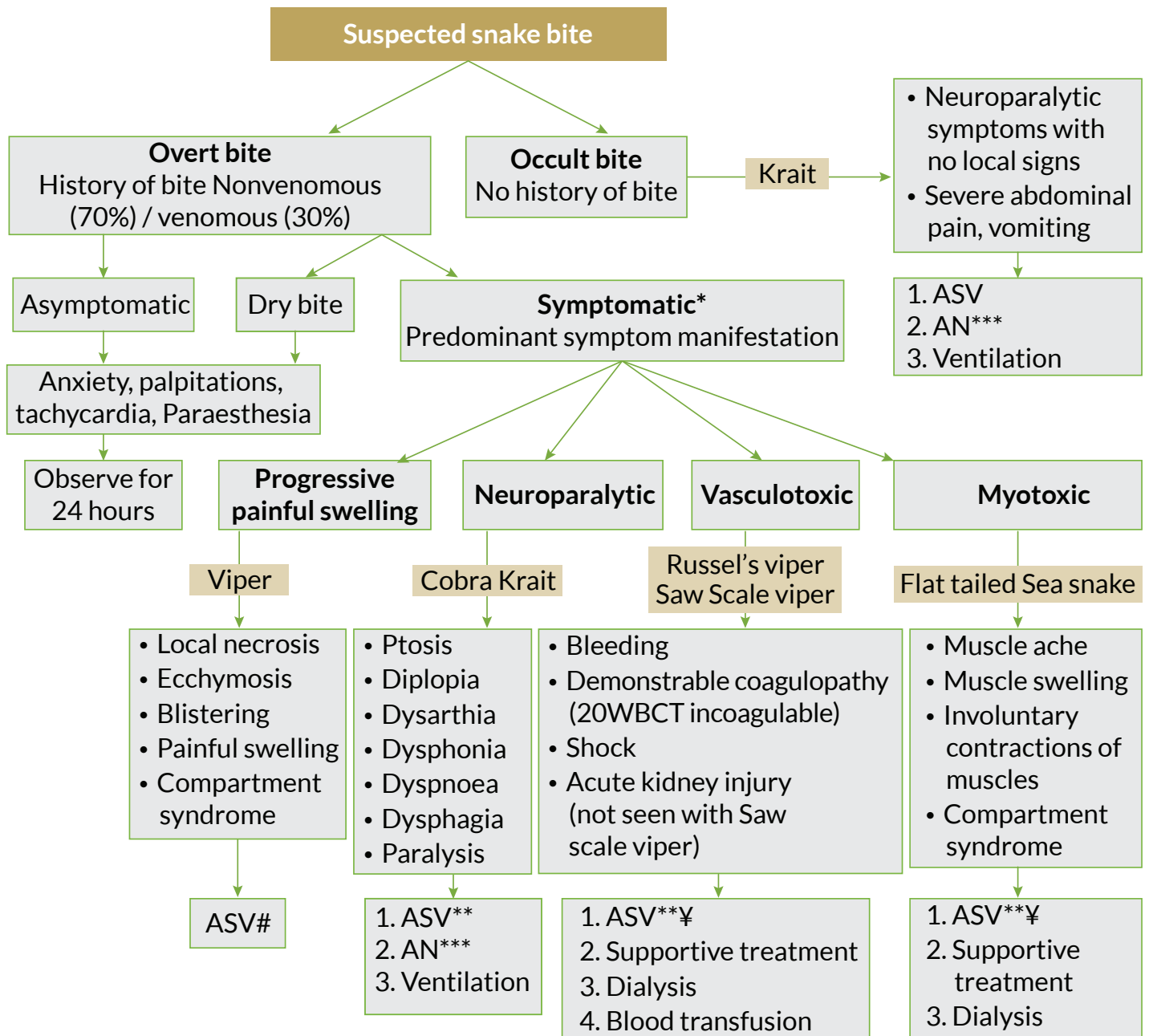
# WHEN TO SUSPECT/RECOGNIZE SNAKEBITE

## CLINICAL PRESENTATION

Clinical presentation of snakebite victim depends upon species of snake, amount of venom injected, season of the bite, whether snake is fed or unfed, site of bite, area covered or uncovered, dry or incomplete bite, multiple bites, venom injection in vessel, weight of the victim and time elapsed between the bite and administration of ASV. Venom concentration and constitution depends on environmental conditions as well as snake's maturity and darkness of colour of snake (Bawaskar HS et al 2014).

Patient can present in any of the four clinical syndromes or with overlapping syndrome i.e. progressive weakness (neuromuscular/neurotoxic), bleeding (vasculotoxic/haemotoxic), myotoxic and painful progressive Swelling (Figure 1).

**Figure 1. Four presenting clinical syndromes of snakebite i.e. progressive weakness (neuromuscular/neurotoxic), bleeding (vasculotoxic/haemotoxic), myotoxic and painful progressive Swelling and its management.**



\* Even though present as predominant manifestation but there may be overlap of syndrome as well.

# ASV indicated in rapidly developing swelling only. Purely localized swelling with or without bite marks is not an indication of ASV.

\*\* For reaction to anti snake venom (ASV) Dose of Adrenaline 0.5 mg IM (in children 0.01 mg/kg).

¥ Specific ASV for sea snake and Pit viper bite is not available in India. However, available ASV may have some advantage by cross reaction.

\*\*\* 'AN' injection Atropine 0.6 mg followed by neostigmine(1.5mg) IV stat (In children Inj. Atropine 0.05 mg/kg followed by Inj. Neostigmine 0.04 mg/kg IV.) Repeat neostigmine 0.5 mg (in children 0.01mg/kg) with atropine every 30 minutes for 5 doses. Thereafter taper dose at 1 hour, 2 hour, 6 hours and 12 hour. Positive response is measured as 50% or more recovery of the ptosis in one hour. If no response after 3rd dose stop AN injection. **No AN injection in confirmed krait bite**

- The snake specie shown above are indicative only. Russell's viper envenoming in Tamil Nadu and some other areas commonly causes paralysis –the venom of this species varies considerably across its range in India.

# RECOMMENDATIONS

## FIRST AID MEASURES

### By bystander or victim

Immediately transfer after providing first aid to a health facility where optimal medical care with anti snake venom (ASV) is available, close observation and definite treatment can be provided.

### At The Community or Village Level

- Check history of snakebite and look for obvious evidence of a bite (fang puncture marks, bleeding, swelling of the bitten part etc.). However, in krait bite no local marks may be seen. It can be noted by magnifying lens as a pin head bleeding spot with surrounding rash.
- Reassure the patient as around 70% of all snakebites are from non-venomous species.



- Immobilize the limb in the same way as a fractured limb (Apply splint extending to the entire length of the limb, immobilizing all of the joints of the limb) in the recovery position (prone, on the left side) with his/her airway protected to minimize the risk of aspiration of vomitus. Use any rigid object as a splint e.g. spade, piece of wood or tree branch, rolled up newspapers etc.), **but do NOT block the blood supply or apply pressure.**
- Nil by mouth till victim reaches a medical health facility.
- Shift the victim to the nearest health facility (PHC or hospital) immediately.
- Arrange transport of the patient to medical care as quickly, safely and passively as possible by vehicle ambulance (toll free no. 102/108/etc.), boat, bicycle, motorbike, stretcher etc. Motorbike may be a feasible alternative for rural India where no other transport is available **but third person must sit behind the patient.**
- Victim must not run or drive himself to reach a Health facility.
- Remove shoes, rings, watches, jewellery and tight clothing from the bitten area as they can act as a tourniquet when swelling occurs.
- Leave the blisters undisturbed.
- Inform the doctor of any symptoms such as progress of swelling, ptosis or new symptoms that manifest on the way to hospital.
- If patient is being referred if possible medical officer can accompany with patient to know the progress, manifestation of the new symptoms (such as progress of swelling, ptosis or new symptoms) and management and treatment of shock and cardiopulmonary resuscitation (CPR) on the way.

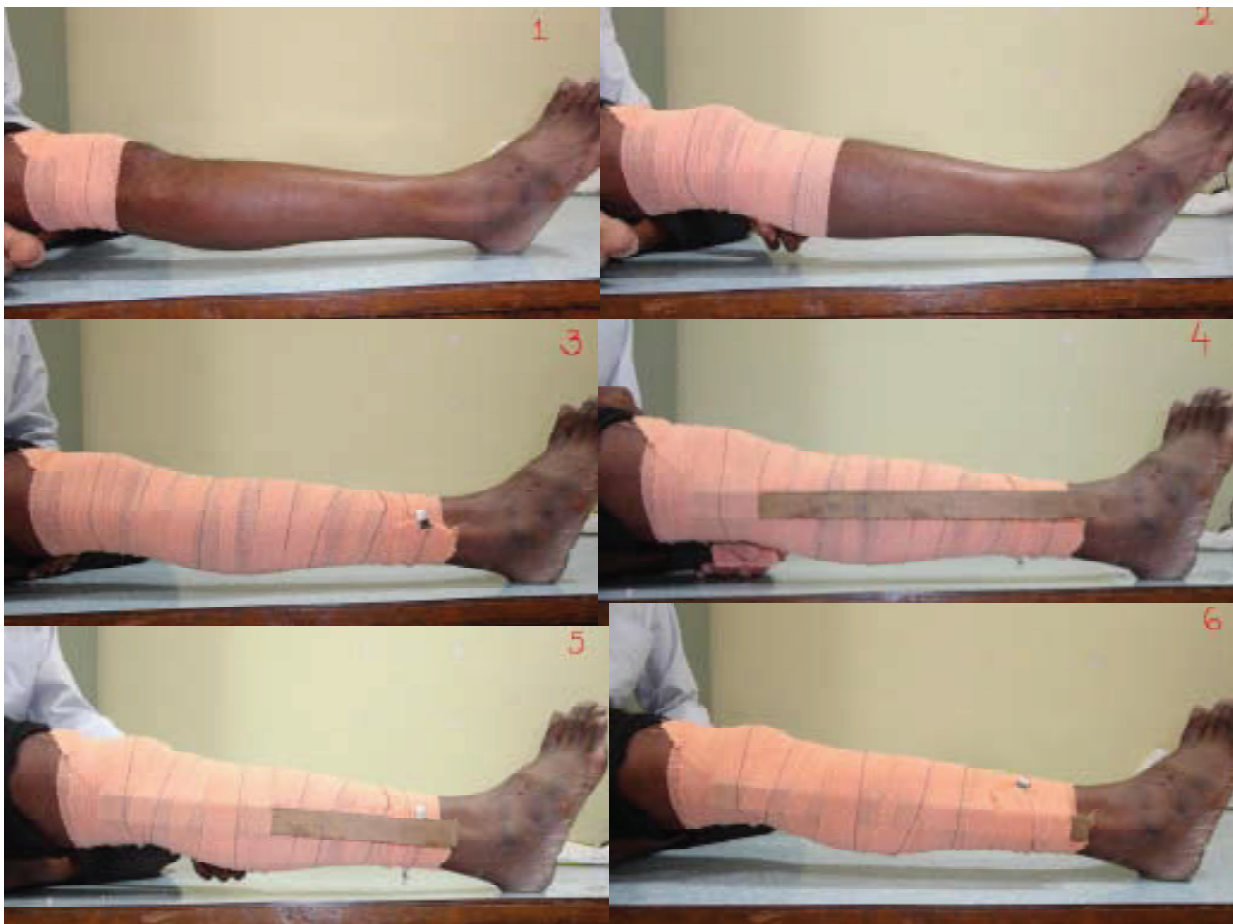


## Important don'ts

- Do not attempt to kill or catch the snake as this may be dangerous.
- Traditional remedies have NO PROVEN benefit in treating snakebite. Some of them may produce confusing signs and symptoms.

- Discard traditional first aid methods (black stones, scarification) and alternative medical/herbal therapy as they have no role and do more harm than good by delaying treatment.
- Do not wash the wound or interfere with the bite wound (incisions, suction, rubbing, tattooing, vigorous cleaning, massage, application of herbs or chemicals, cryotherapy, cautery) as this may introduce infection, increase absorption of the venom and increase local bleeding.
- Do NOT apply or inject anti snake venom (ASV) locally.
- Do not tie tourniquets as it may cause gangrenous limbs.
- If victim is expected to reach the hospital in more than 30 minutes but less than 3 hours crepe bandage may be **applied by qualified medical personnel only** till the patient is shifted to the hospital. The bandage is wrapped over the bitten area as well as the entire limb with the limb placed in a splint. It should be capable of admitting a finger beneath it See Figure 2.) **If trained personnel is not present , Do NOT try).**

**Figure 2: Pressure immobilization (Sutherland method) modified (Sutherland 1979)**



## At A Health Care Facility

- Secure IV line in PHC itself and use normal saline to keep IV access open.
- Start fluids, if patient is in shock.
- **Admit all victims of snakebite confirmed or suspected and keep under observation for 24 hours.**
- Provide first-aid measures and supportive measures immediately.
- Observe for signs of envenomation.
- Administer ASV therapy as soon as there is evidence of envenomation.

## SIGN & SYMPTOMS

The clinical presentation of a snakebite victim varies with the age and size of the patient, the species of snake, the number and location of the bites, and the quantity and toxicity of the venom.

See figure 1 for presenting clinical syndromes of venomous snakebite. *There may be considerable overlap of clinical features.*

Victims of snakebite may suffer any or all of the following (WHO 2015 adopted):

1. No physical effects other than the fang/tooth puncture due to bites by non-venomous snakes, animals other than snakes (lizards, fish, rodent, spiders), dry bite by venomous snake.

### Examination of the bite site

Examine the bite site and look for fang marks, or any signs of local envenomation.

**Fang mark or their patterns have no role to determine whether the biting species was venomous or non venomous or amount of venom injected, severity of systemic poisoning and nature of poisoning – Elapidae or viperidae venom etc.** Some species like Krait may leave no bite marks.

2. Local envenoming confined to the bitten part of the body. These effects may be transient, resolving in hours or a few days; may persist for few weeks or debilitating, some time permanently due to local necrotic effects of venom and complicating infections.



3. Systemic envenoming involving organs and tissues distant from the bitten part of the body. These effects may be transient, persistent, life threatening and debilitating, sometimes permanently.
4. Effects of anxiety prompted by frightening experience of being bitten (real or imagined) and by exaggerated beliefs about the potency and speed of action of snake venoms. The symptoms may mislead the treated personnel.
5. Effects of first-aid and other pre-hospital treatments that may cause misleading clinical features.

### Asymptomatic (i.e., non Venom related symptoms)

Patients many a times present with nonspecific symptoms related to anxiety. Common symptoms in these patients are:

- Palpitations, sweating, tremulousness, tachycardia, tachypnoea, elevated blood pressure, cold extremities and paraesthesia (pins and needles pricking sensation of the extremities). These patients may have dilated pupils suggestive of sympathetic over activity. Other may develop vasovagal shock (faintness and collapse with profound slowing of heart) after the bite or suspected bite.
- Differentiate from symptoms and signs of envenomation listed below.
- Redness, increased temperature, persistent bleeding and tenderness locally. However, local swelling can be present in these patients due to tight ligature.

### Dry Bite

Bites by nonvenomous snakes are common and bites by venomous species are not always accompanied by the injection of venom (dry bites).

- The percentage of dry bites ranges from 10–80% for various venomous snakes.
- Even in case of dry bite, symptoms due to anxiety and sympathetic over-activity (as above) may be present. As symptoms associated with panic or stress sometimes mimic early envenoming symptoms, clinicians may have difficulties in determining whether envenoming occurred or not.
- Some people who are bitten by snakes (or suspect or imagine that they have been bitten) or have doubts regarding bite may develop quite striking symptoms and

signs, even when no venom has been injected due to understandable fear of the consequences of a real venomous bite.

## Neuroparalytic (Progressive weakness; Elapid envenomation)

- Neuroparalytic snakebite patients present with typical symptoms within 30 min–6 hours in case of Cobra bite. Many species, particularly the Krait and the hump-nosed pit viper are known for delayed appearance of symptoms which can develop after 6–12 hours; however, ptosis in Krait bite have been recorded as late as 36 hours after hospitalization.
- These symptoms can be remembered as 5 Ds and 2 Ps.
  - i. 5 Ds – dyspnea, dysphonia, dysarthria, diplopia, dysphagia
  - ii. 2 Ps – ptosis, paralysis
- In chronological order of appearance of symptoms – furrowing of forehead, Ptosis (drooping of eyelids) occurs first (Figure 3), followed by Diplopia (double vision), then Dysarthria (speech difficulty), then Dysphonia (pitch of voice becomes less) followed by Dyspnoea (breathlessness) and Dysphagia (Inability to swallow) occurs. All these symptoms are related to 3rd, 4th, 6th and lower cranial nerve paralysis. Finally, paralysis of intercostal and skeletal muscles occurs in descending manner.
- Other signs of impending respiratory failure are diminished or absent deep tendon reflexes and head lag.
- Additional features like stridor, ataxia may also be seen.
- Associated hypertension and tachycardia may be present due to hypoxia.

**Figure 3: Ptosis with neuroparalytic snakebite**



- To identify impending respiratory failure bedside lung function test in adults viz.
  - i. Single breath count – number of digits counted in one exhalation - normal >30
  - ii. Breath holding time – breath held in inspiration – normal > 45 sec
  - iii. Ability to complete one sentence in one breath.
- Cry in a child whether loud or husky can help in identifying impending respiratory failure.
- **Bilateral dilated, poorly or a non-reacting pupil is not the sign of brain dead in elapid envenoming (Figure 3).**
- **Refer patients presenting with neuromuscular symptoms immediately to a higher facility for intensive monitoring after giving Atropine Neostigmine (AN) injection (schedule of AN injection described below).**

## Vasculotoxic (haemotoxic or Bleeding)

**General signs and symptoms of Viperine envenomation (Vasculotoxic bites are due to Viper species. They can have local manifestations as well as systemic manifestations.**

**Local manifestations** – These are more prominent in Russel’s viper bite followed by Saw scaled viper and least in Pit viper bite. Local manifestations are in form of:

- Local swelling, bleeding, blistering, and necrosis.
- Pain at bite site and severe swelling leading to compartment syndrome. Pain on passive movement. Absence of peripheral pulses and hypoesthesia over the fields of nerve passing through the compartment helps to diagnose compartment syndrome.
- Tender enlargement of local draining lymph node.

## Systemic manifestations

- Visible systemic bleeding from the action of haemorrhagins (Figure 4) e.g. gingival bleeding, epistaxis, ecchymotic patches, vomiting, hematemesis, hemoptysis, bleeding per rectum, subconjunctival hemorrhages, continuous bleeding from the bite site, bleeding from pre-existing conditions e.g. haemorrhoids, bleeding from freshly healed wounds.

**Figure 4: Local and systemic Vasculotoxic (haemotoxic or Bleeding) manifestations of Viperine envenomation**



- Bleeding or ecchymosis at the injection site is a common finding in Viper bites.
- The skin and mucous membranes may show evidence of petechiae, purpura ecchymoses, blebs and gangrene.
- Swelling and local pain.
- Acute abdominal tenderness may suggest gastro-intestinal or retro peritoneal bleeding.
- Lateralizing neurological symptoms such as asymmetrical pupils may be indicative of intra-cranial bleeding.
- Consumption coagulopathy detectable by 20WBCT, develops as early as within 30 minutes from time of bite but may be delayed.

### **Locked in syndrome (LIS)**

Locked in syndrome (LIS) is defined as quadriplegia and anarthria with preserved consciousness. Patients retain vertical eye movement, facilitating non-verbal communication. In complete locked in syndrome (LIS) patient cannot communicate in any form. Central LIS is seen commonly due to lesions in the ventral pons (Smith and Delargy 2005; Prakash 2008; Poovazhagi 2013). Peripheral causes of LIS are severe acute polyneuropathies, neuromuscular junction blockade due to myasthenia gravis toxins and snakebite (Prakash 2008). Knowing the peripheral causes are very important as one may

make a wrong diagnosis of brain death and is treatable and complete recovery can be possible with timely intervention. Confirmatory tests like EEG, cerebral blood flow, nerve conduction velocities are recommended to avoid misdiagnosis of coma or brain death.

Peripheral LIS usually occurs in Elapidae bites, especially Krait bite and hence increasing ones suspicion rate is important as they can be referred to a centre with ventilator support.

## Life threatening complications

- Acute Kidney Injury (AKI) e.g. declining or no urine output, deteriorating renal signs such as rising serum creatinine, urea or potassium. Some species e.g. Russell's viper (*Daboia* sp) frequently cause acute Kidney Injury. Patient presents with bilateral renal angle tenderness, albuminuria, hematuria, hemoglobinuria, myoglobinuria followed by oliguria and anuria with AKI.
- Hypotension due to hypovolaemia or direct vasodilatation or direct cardiotoxicity aggravates acute kidney injury.
- Parotid swelling, conjunctiva oedema, sub-conjunctival haemorrhage, renal failure, acute respiratory distress syndrome [leaking syndrome] and refractory shock.
- Long term sequelae e.g. pituitary insufficiency with Russell's viper (*Daboia* sp), Sheehan's syndrome or amenorrhea in females.

## Systemic Capillary Leak Syndrome (SCLS)

Idiopathic systemic capillary leak syndrome (ISCLS) is a rare disorder characterized by episodes of severe hypotension, hypoalbuminemia, hemoconcentration without albuminuria due to profound derangement of the vascular endothelium resulting in leakage of plasma and proteins into the interstitial compartment. Capillary leak syndrome is a sinister complication of *Daboia russelii* bite as it is beset with an excess of morbidity and mortality. Manifestations like parotid swelling, conjunctival chemosis, myalgia, thirst and systemic hypotension observed in patients of *Daboia russelii* bite indicate capillary leak syndrome. It is seen in more commonly in males as compared to females.

Hemoconcentration, increased HCT, leukocytosis, pleural effusion are early laboratory and radiological markers of capillary leak syndrome and should alert the clinician to seek urgent interventions in *Daboia russelii* bite.

Figure: A) 17 year old patient with viper bite at admission. B) & C) Same patient with Periorbital swelling, Conjunctival chemosis and icterus 24 hours later. D) Another patient with viper bite developing parotid swelling 24 hours later.



## Painful Progressive Swelling (PPS)

Progressive painful swelling is indicative of local venom toxicity. It is prominent in Russel's viper bite, Saw scaled viper bite and Cobra bite. This is associated with:

- Local necrosis which often has a rancid smell. Limb is swollen and the skin is taut and shiny. Blistering with reddish black fluid at and around the bite site. Skip lesions around main lesion are also seen. (Figure 5).
- Ecchymoses due to venom action destroying blood vessel wall.
- Significant painful swelling potentially involving the whole limb and extending onto the trunk.
- Compartment syndrome will present invariably.
- Regional tender enlarged lymphadenopathy.

Figure 5: Snakebite marks and local swelling and necrosis



## Myotoxic

This presentation is common in Sea snakebite. Patient presents with:

- Muscle aches, muscle swelling, involuntary contractions of muscles.
- Passage of dark brown urine.
- Compartment syndrome, cardiac arrhythmias due to hyperkalaemia, acute kidney injury due to myoglobinuria, and subtle neuromuscular signs.

## Occult snakebite

- Krait bite victims often present in the early morning with paralysis with no local signs with no bite marks.
- Snakebite victim gets up in the morning with severe epigastric/umbilical pain with vomiting persisting for 3 – 4 hours and followed by typical neuromuscular symptoms within next 4- 6 hours. There is no history of snakebite.
- Unexplained respiratory distress in children in the presence of ptosis or sudden onset of acute flaccid paralysis in a child (locked-in syndrome) is highly suspicious symptoms in endemic areas particularly of Krait bite envenomation. Sometimes patients may present with throat, chest or joint pain.

Early morning symptoms of acute pain abdomen with or without neuromuscular paralysis can be mistaken for a acute appendicitis, acute abdomen, stroke, GB syndrome, myasthenia gravis and hysteria (Bawaskar 2002). Krait bite envenomation is diagnosed by developing descending neuromuscular paralysis while GB syndrome is by ascending paralysis.

Strong clinical suspicion and careful examination can avoid not only costly and unnecessary investigations such as CT scan, MRI, nerve conduction studies, CSF studies and many others but also help in avoiding undue delay in initiation of a specific treatment with ASV. Atropine neostigmine (AN) test helps to rule out myasthenia gravis.

**Snakebite is a medical emergency, history, symptoms and signs must be obtained rapidly.**

**ON PRESENTATION, PATIENTS CAN BE CRITICAL OR NON CRITICAL  
(See FIGURE 1).**

# ASSESSMENT

## Critical Arrival: *Patient assessment on arrival*

1. Assess circulation, airway and breathing and deal with any life threatening symptoms on presentation.

**Vasculotoxic patients** presenting with bleeding from multiple orifices with hypotension, reduced urine output, obtunded mentation (drowsy, confused), cold extremities need urgent attention and ICU care for volume replacement, pressor support, dialysis and infusion of blood and blood products (See following sections).

**Neuromuscular patients** presenting with respiratory paralysis, tachypnoea or bradypnoea or paradoxical respiration (only moving abdomen), obtunded mentation, and peripheral skeletal muscle paralysis need urgent ventilator management with endotracheal intubation, ventilation bag or ventilator assistance.

Other patients can be evaluated to decide severity of their illness (see non-critical arrival below).

2. Establish large bore intravenous access and start normal saline slow infusion.
3. Before removal of the tourniquet/ligatures, test for the presence of a pulse distal to the tourniquet. If the pulse is absent ensure a doctor is present before removal or ligatures.
4. **In case of clinically confirmed venomous bite, remove tourniquet only after starting of loading dose of ASV and keep Atropine Neostigmine injection ready.** In case of multiple ligatures, all the ligatures can be released in Emergency Room EXCEPT the most proximal one; which should only be released after admission and all preparations.
5. Carry out a simple medical assessment including history and physical examination and record (see Annexure 2) and repeat all above, every 1-2 hourly – bite site local swelling, painful tender and enlarged local lymph glands, persistent bleeding from the bite wound, blood pressure, pulse rate, bleeding (gums, nose, vomit, stool or urine), level of consciousness, drooping eyelids (ptosis) and other signs of paralysis. **The Glasgow Coma scale cannot be used to assess the level of consciousness of patients paralyzed by neurotoxic venom.**



- Check for and monitor the following: Pulse rate, respiratory rate, blood pressure and 20 minutes Whole Blood clotting test (20 WBCT) every hour for first 3 hours and every 6 hours for remaining 24 hours.
- Check distal pulses and monitor, if there is presence of gross swelling. The presence of a pulse does not rule out compartment syndrome. **Pain on passive movement, pallor, pulseless limb, hypoaesthesia over the sensory nerve passing through the compartment are suggestive of compartment syndrome** (see compartment syndrome below for details).

## Patient assessment

### Non critical arrival and Critical patients after stabilization: patient assessment

- Determine the time elapsed since the snakebite and as to what the victim was doing at the time of the bite, history of sleeping on floor bed in previous night.
- Determine if any traditional medicines have been used.
- Obtain a brief medical history (e.g., date of last tetanus immunization, use of any medication, presence of any systemic disease, and history of allergy)

**Examination of pregnant women** - Monitor uterine contractions and foetal heart rate. Lactating women who have been bitten by snakes should be encouraged to continue breast feeding.

## Differential identification of type of snakebite based on the symptoms and signs

Though to a large extent the manifestation of snakebite depends upon the species of snake, unfortunately, in many cases the biting snake is not seen, and if it is, its description by the victim is often misleading (Harris et al 2010). Therefore identification of the type of snake should not hold the treatment. At times the bite mark might not be visible (e.g., in the case of Krait). The clinical manifestations of the patient may not correlate with the species of snake brought as evidence. Examine carefully the snake, if brought, and identified (Figure 6), if possible. *Discourage bringing the killed snake into the emergency department.* Identification of the species even if killed should be carried out carefully, since crotalids can envenomate even when dead.

If snake is not available for identification in such a situation showing specimens of snakes preserved in formalin in glass jars or pictures of snakes would help the patient or the witness to recognize the offending snake which facilitates the judgment of the clinician. One smart phone photograph of the snake, dead or alive, if can be taken safely, for confirmation by an expert would help in identifying the snake.

Inspection of local bite site and bitten limb can also help to identify snake's species. Local swelling, bleeding, blistering, necrosis suggests Cobra bite. Minimum local changes indicate Krait bite. Local bleeding suggests Nilgiri Russel's viper. Pain in abdomen and hyper peristalsis indicates Krait bite.

### Figure 6: Snake identification by the patient



### Clues for severe snake envenomation are:

- Rapid early extension of local swelling from the site of the bite. In Cobra bite on finger, necrosis may start in few minutes.
- Early tender enlargement of local lymph nodes, indicating spread of venom in the lymphatic system
- Visible signs of neurological impairment such as ptosis, muscular weakness, respiratory distress or respiratory arrest.
- Early spontaneous systemic bleeding especially bleeding from the gums, bite site, haematuria, haemoptysis, epistaxis or ecchymoses.
- Unconsciousness either with or without respiratory arrest.
- Passage of dark brown urine
- Snake identified as a very venomous one i.e., Cobra, Russel's viper.

## LAB INVESTIGATIONS

### Bedside 20 minute whole blood clotting test (20 WBCT)

Place 2 ml of freshly sampled venous blood in a small glass test tube and leave undisturbed for 20 minutes at ambient temperature. Gently tilt the test tube to see if the blood is still liquid; the patient has hypofibrinogenaemia (“incoagulable” blood or “**not clotted**”) as a result of venom-induced consumption coagulopathy (Figure 7). **Caution:** Use clean new dry glass test tube only to avoid false positive tests.

**If blood clot is formed and signs and symptoms of neurotoxic envenomation present, classify as neurotoxic envenomation.** In case where the 20WBCT result is inconsistent with the patients’ clinical condition, repeat the test in duplicate, including a “control” (blood from a healthy person). If the blood is solid i.e. has clotted the patient has passed the coagulation test and no **ASV is required at this stage**. 20 WBCT may remain negative (clotting) in patients with evolving venom –induced DIC, therefore, the patient is re-tested every hour for the first three hours and then 6 hourly for 24 hours until either test result is not clotted or clinical evidence of envenomation to ascertain if dose of ASV is indicated. Antivenom treatment should not be delayed if there is other evidence of spontaneous systemic bleeding distant from the bite site. In case test is non-clotting, repeat 6 hour after administration of loading dose of ASV. In case of neurotoxic envenomation repeat clotting test after 6 hours. (Expert Consensus)

Figure 7: 20 minute whole blood clotting test (20 WBCT).



**Counsel patient and relatives in the beginning that, 20WBCT may be repeated several times before giving any medication.**

The first blood drawn from the patient should be typed and cross-matched, as the effects of both venom and ASV can interfere with later cross-matching.

**Other investigations that may assist in the management of snake bite at various levels of healthcare**

### **Other Lab tests at Primary health centre**

- Peak flow meter in patients (adolescents and adults) presenting with neuromuscular syndrome.
- If Peak flow meter is not available in PHC then assess respiratory function using bedside tests - single breath count, breath holding time and ability to complete one sentence in one health as described earlier.
- Urine examination for albumin and blood by dipstick.

### **Others lab test at District Hospital**

In addition to the above

- Prothrombin time
- Platelet count,
- Clot retraction time
- Liver function test (LFT)
- Renal Function test (RFT)
- Serum Amylase
- Blood sugar
- ECG
- Abdominal ultrasound
- 2D Echo (if available)

## Others Lab test at Tertiary Health Care Centre

In addition to the above

- *In neuromuscular envenomation*
  - ◆ Arterial blood gases. Caution: Arterial puncture is contraindicated in patients with haemostatic abnormalities.
  - ◆ Pulmonary function tests
- *In Vasculotoxic venomation*
  - ◆ For coagulopathy- BT, CT, PT, APTT, Platelet, Serum Fibrinogen, FDP D-Dimer assay, LDH, peripheral blood smear
  - ◆ Hemolysis -Urine for myoglobin, Urine haemoglobin
  - ◆ For renal failure- Urine microscopy for RBC, casts, RFT, urinary proteins, creatinine ratio
  - ◆ Hepatic injury – LFTs including SGOT, SGPT, Alkaline phosphatase, serum proteins
  - ◆ Cardiotoxicity- CPK-MB, 2D Echo, BNP
  - ◆ Myotoxic – CPK, SGOT, Urine myoglobin, compartment pressure
  - ◆ Infection- Serum procalcitonin, culture (blood, urine, wound) and sensitivity
- Arterial blood gases and urine examination should be repeated at frequent intervals during the acute phase to assess progressive systemic toxicity).

## Rationale and interpretation of the tests

1. **Hemogram:** The hemogram may show transient elevation of hemoglobin level due to hemoconcentration (because of the increased capillary leak) or may show anemia (due to hemolysis, especially in viper bites). Presence of neutrophilic leucocytosis signifies systemic absorption of venom. Thrombocytopenia may be a feature of viper envenomation.
2. **Platelet count:** This may be decreased in victims of envenoming by vipers.
3. **White blood cell count:** An early neutrophil leucocytosis is evidence of systemic envenoming from any species.

4. *Blood film*: Fragmented red cells (“helmet cell”, schistocytes) are seen when there is microangiopathic haemolysis.
5. *Plasma/serum*: May be pinkish or brownish if there is gross haemoglobinaemia or myoglobinaemia.
6. Serum creatinine: This is necessary to rule out acute kidney injury after viper and sea snakebite.
7. Serum creatinine phosphokinase (CPK): Elevated levels of these markers suggests muscle damage (caution for renal damage) and raised amylase suggests pancreatic injury. In patients who develop capillary leak syndrome meticulous monitoring of CPK and blood pressure control is necessary to avoid the inception of renal failure.
8. Prothrombin time (PT) and activated partial thromboplastin time (aPTT): Prolongation may be present in viper bite (to be repeated 6 hourly, if abnormal).
9. Fibrinogen and fibrin degradation products (FDPs): Low fibrinogen with elevated FDP is present when venom interferes with the clotting mechanism.
10. Urine examination for Proteinuria/ RBC/ Haemoglobinuria/ Myoglobinuria: The colour of the urine (pink, red, brown, black) should be noted and the urine should be tested by dipsticks for blood or haemoglobin or myoglobin. Standard dipsticks do not distinguish blood, haemoglobin and myoglobin. Haemoglobin and myoglobin can be separated by immunoassays but there is no easy or reliable test. Microscopy will confirm whether there are erythrocytes in the urine.
11. Electrocardiogram (ECG): Common electrocardiographic changes seen are sinus tachycardia, sinus arrhythmia, sinus bradycardia, tall T-wave in V2, pattern suggestive of acute anterior wall infarction with reciprocal changes, myocardial ischemia, non-specific ST-T changes and atrioventricular block (Nayak et al 1990).
12. Electroencephalogram (EEG): EEG changes have been noted in up to 96% of patients bitten by snakes. However, rarely needed for patient management. These changes start within hours of the bite but are not associated with any features of encephalopathy. 62% showed grade I changes, 31% cases manifested grade II changes (moderate to severe abnormality), and the remaining 4% showed severe

abnormality (grade III). These abnormal EEG patterns were seen mainly in the temporal lobes (Ramachandran S et al 1995).

13. Pulse oximetry for oxygen in patients with respiratory failure or shock.
14. Electrolyte determinations: These tests are necessary for patients with respiratory paralysis and systemic symptoms.
15. Arterial blood gases and pH may show evidence of respiratory failure (neurotoxic envenoming) and acidaemia (respiratory or metabolic acidosis).
16. X-Ray/ CT/ Ultrasound (The use of X-Ray and ultrasound are of unproven benefit, apart from identification of bleeding in Viperine bites).





# ANTI SNAKE VENOM (ASV) THERAPY

1. **If ASV is indicated i.e. signs and symptoms of envenomation with or without evidence of laboratory tests, administer FULL dose** without any delay. Do NOT wait for any test report. In a patient with a history of Bite; known or unknown, if there is spontaneous abnormal bleeding beyond 20 minutes from time of bite, start ASV, do NOT wait for 20 WBCT report.
2. Carry out a more detailed clinical and laboratory assessment including biochemical and haematological measurements, ECG or radiography, as indicated to get a baseline data.
3. **There are no absolute contraindications to ASV.** However, do not routinely administer ASV to any patient claiming to have bitten by a snake as ASV exposes such patients to the risks of ASV reactions unnecessarily; besides wastage of valuable and scarce stocks of ASV. **However, at the same time do not delay or withhold ASV on the grounds of anaphylactic reaction to a deserving case. Do NOT give incomplete dose.**
4. Purely local swelling, even if accompanied by a bite mark from an apparently venomous snake, is not a ground for administering ASV. Swelling, a number of hours old is also not a ground for giving ASV. **However, rapid development of swelling indicates bite with envenoming requiring ASV.**

## ANTI SNAKE VENOM (ASV)

- Anti snake venom treatment is the only specific treatment, it should be given as soon as it is indicated. It may reverse systemic envenomation abnormality even when this has persisted for several days or, in the case of haemostatic abnormalities, persisting for two or more weeks. The dosage required varies with the degree of envenomation.

- In the presence of coagulopathy, Polyvalent ASV freeze-dried (heat stable; to be stored at cool temperature; shelf life 3-5 years) or neat liquid ASV (heat labile; ready to use; requires reliable cold chain (2-8°C and NOT frozen) with a refrigeration shelf life of 2 years but costlier) whichever is available may be used before expiry date. If integrity of the cold chain is not guaranteed use of lyophilized ASV is preferred. However, in patients with severe envenoming recently expired antivenoms may be used if there is no alternative (WHO 2015).

## ANTI SNAKE VENOM (ASV) DOSE

Reconstitute ASV supplied in dry powder form by diluting in 10 ml of distilled water/normal saline. Mixing is done by swirling and not by vigorous shaking. Caution: Do not use, if reconstituted solution is opaque to any **extent**.

**Dose of ASV for neuroparalytic snakebite** – ASV 10 vials stat as infusion over 30 minutes followed by 2nd dose of 10 vials after 1 hour if no improvement within 1st hour.

**Dose of ASV for vasculotoxic snakebite** - Two regimens low dose infusion therapy and high dose intermittent bolus therapy can be used. Low dose infusion therapy is as effective as high dose intermittent bolus therapy and also saves scarce ASV doses (Expert Consensus):

**Low Dose infusion therapy** – 10 vials for Russel’s viper or 6 vials for Saw scaled viper as stat as infusion over 30 minutes followed by 2 vials every 6 hours as infusion in 100 ml of normal saline till clotting time normalizes or for 3 days whichever is earlier.

**OR**

**High dose intermittent bolus therapy** - 10 vials of polyvalent ASV stat over 30 minutes as infusion, followed by 6 vials 6 hourly as bolus therapy till clotting time normalizes and/or local swelling subsides.

**No ASV for Sea snakebite, confirmed Green Pit snakebite even if with signs of envenomation as available ASV do not contain antibodies against them.**

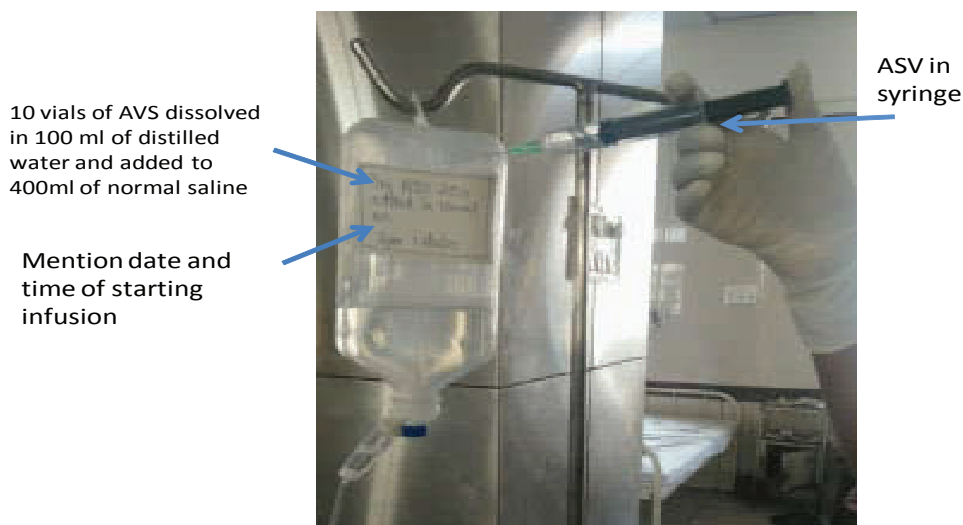
The range of venom injected is 5 mg-147 mg. The total required dose range is between 10 and 30 vials as each vial neutralizes 6 mg of Russell’s Viper venom. Depending on the patient condition, additional vials can be considered.

Patients with capillary leak syndrome required higher dose of ASV compared to those without it. Early recognition and effective treatment like infusion of fresh frozen plasma and reduction of hemoconcentration may play a key role to reduce its gruesome mortality (Menon and Joseph 2014; Atkinson, et al 1977).

## MONITORING OF PATIENTS AND PRECAUTIONS DURING ASV ADMINISTRATION

- Give ASV only by the IV route, and slowly, with the physician at the bed side during the initial period to intervene immediately at the first sign of any reaction. Observe all patients carefully every 5 min for first 30 min, then at 15 min for 2 hours for manifestation of a reaction. At the earliest sign of an adverse reaction suspend temporarily.
- The rate of infusion can be increased gradually in the absence of a reaction until the full starting dose has been administered (over a period of ~1 hour).
- Give prophylactic epinephrine 0.25 mg of 0.1% solution by subcutaneous injection (Children 0.005 mg/kg body weight of 0.1% solution) except in known hypertensive or patients with cardiovascular disease and draw Epinephrine (adrenaline) in readiness in two syringes before ASV is administered.

**Figure 8: ASV infusion and dosage schedule** Each vial of AVS be dissolved in 10 ml of distilled water and added to an infusion medium such as normal saline (i.e. 10 vials of AVS dissolved in 100 ml of distilled water and added to 400ml of normal saline). The volume of infusion is reduced according to the body size and the state of hydration of the patient. In oliguric patients restrict fluids and use infusion pump to give full dose of ASV over 30 minutes.



Administer 10 vials of ASV in first hour.  
Maintain slow drip for 24 hours

- **NEVER** give ASV by IM route and do **NOT** inject the ASV locally at the bite site.
- **Take all aseptic precautions before starting ASV to prevent any pyrogenic reactions to ASV.**
- Maintain a strict intake output chart and note colour of urine to detect acute kidney injury early.

## ASV DOSE IN PREGNANCY

Pregnant women are treated in exactly the same way as other victims. The same dosage of ASV is given. Refer the victim to a gynecologist for assessment of any impact on the foetus.

## ASV DOSE IN CHILDREN

Children also are given exactly the same dose of ASV as adults as snakes inject the same amount of venom into children and adult.

Infusion: liquid or reconstituted ASV is diluted in 5-10 ml/kg body weight of normal saline. However, reduce amount of fluid in running bottle to 200 ml to avoid fluid over load.

## ASV DOSAGE IN VICTIMS REQUIRING LIFE SAVING SURGERY

Rarely patient may develop intracranial bleeding for which a life saving surgery is required. In such cases, before surgery, coagulation must be restored to avoid catastrophic bleeding and higher initial dose of ASV (up to 30 vials) can be administered.

## REPEAT DOSE OF ASV

### Repeat dose: in Vasculotoxic or haemotoxic envenomation

Repeat clotting test every 6 hours until coagulation is restored. Administer ASV every 6 h until coagulation is restored. In patients who continue to bleed briskly repeat ASV within 1-2 hours (WHO 2015). Envenomation by the Hump-nosed Pit viper does not respond to normal Indian polyvalent ASV and coagulopathy may continue for up to 3 weeks. If 30 vials

of ASV have been administered reconsider whether continued administration of ASV is serving any purpose, particularly in the absence of proven systemic bleeding.

If large doses have been administered and the coagulation abnormality persists, give fresh frozen plasma (FFP) or cryoprecipitate (fibrinogen, factor VIII), or give fresh whole blood, if both FFP and cryoprecipitate are not available.

## Repeat dose: neuromuscular or neurotoxic envenomation

Initial dose of ASV 10 vials stat as infusion to be followed by 2nd dose of 10 vials if no improvement within 1st hour. Repeat 2nd dose may be required even after 2-3 hours if relapse of signs of neurotoxicity are noted (may be due to delayed absorption). Maximum dose is 20 vials of ASV for neurotoxically envenomed patients.

## VICTIMS WHO ARRIVE LATE

Sometimes victims arrive late after the bite, often after several days, usually with acute kidney injury. Determine current venom activity such as bleeding in case of viperine envenomation. Perform 20WBCT and determine if any coagulopathy is present then administer ASV. If no coagulopathy is evident, treat kidney injury, if any.

## ASV REACTION

- **NO ASV TEST DOSE MUST BE ADMINISTERED.**
- **SKIN/CONJUNCTIVAL HYPERSENSITIVITY TESTING DOES NOT RELIABLY PREDICT EARLY OR LATE ANTI SNAKE VENOM REACTIONS AND IS NOT RECOMMENDED.**
- Rarely patients may develop severe life-threatening anaphylaxis characterized by hypotension, bronchospasm, and angioedema. However, 20%-60% patients treated with ASV develop either early or late mild reactions (Deshpande et al.2013; Deshmukh et al 2014).
- **Early anaphylactic reactions** occurs within 10–180 min of start of therapy and is characterized by itching, urticaria, dry cough, nausea and vomiting, abdominal colic, diarrhoea, tachycardia, and fever. A minority of these patients may develop severe life-threatening anaphylaxis, hypotension, bronchospasm and angioedema (WHO 2015)

- **Pyrogenic reactions** usually develop 1–2 h after treatment. Symptoms include chills and rigors, fever, and hypotension. These reactions are caused by contamination of the ASV with pyrogens during the manufacturing process.
- **Any new sign or symptom after starting the ASV in drip should be suspected as a reaction to ASV.**
- **Late (serum sickness–type) reactions** develop 1–12 (mean 7) days after treatment. Clinical features include fever, nausea, vomiting, diarrhoea, itching, recurrent urticaria, arthralgia, myalgia, lymphadenopathy, immune complex nephritis and, rarely, encephalopathy.

## PREMEDICATION WITH ADRENALINE (EPINEPHRINE)

Routine use of prophylactic adrenaline is recommended before ASV, except in known hypertensive, and if patient presents with blood pressure more than 140/90 in adult victims or if **evidence of suspicion of underlying cardiovascular disease**. The adult dose of adrenaline (epinephrine) is 0.25 mg of 0.1% solution by subcutaneous injection (Children 0.005 mg/kg body weight of 0.1% solution).

Use of histamine, anti-H1 and anti-H2 blockers, corticosteroids and the rate of intravenous infusion of antivenom between 10 and 120 minutes), do not affect the incidence or severity of early antivenom reactions. (de silva 2011)

## TREATMENT OF EARLY ASV REACTION

1. Stop ASV temporarily.
2. Oxygen
3. Start fresh IV normal saline infusion with a new IV set
4. Administer Epinephrine (adrenaline) (1 in 1,000 solution, 0.5 mg (i.e. 0.5 ml) in adults **intramuscular over deltoid or over thigh**; In children 0.01 mg/kg body weight) for early anaphylactic and pyrogenic ASV reactions.
5. Administer Chlorpheniramine maleate (adult dose 10 mg, in children 0.2 mg/kg) intravenously.
  - ◆ Hydrocortisone can be given but it is unlikely to act for several hours.

- ◆ Once the patient has recovered, re-start ASV slowly for 10-15 minutes keeping the patient under close observation. Then resume normal drip rate.

## For high risk patients

In patients with history of hypersensitivity or exposure to animal serum such as equine ASV, tetanus-immune globulin or rabies-immune globulin in past, severe atopic conditions:

- Give ASV only if they have signs of systemic envenoming.
- Give Inj. Hydrocortisone 200 mg and Chlorpheniramine maleate 22.75 mg prior to the administration of ASV.

## Treatment of Late (serum sickness-type) reactions

- Inj. Chlorpheniramine 2 mg in adults (In children 0.25 mg/kg/day) 6 hourly for 5 days.
- In patients who fail to respond within 24–48 h give a 5-day course of Prednisolone (5 mg 6 hourly in adults and 0.7 mg/kg/day in divided doses in children).

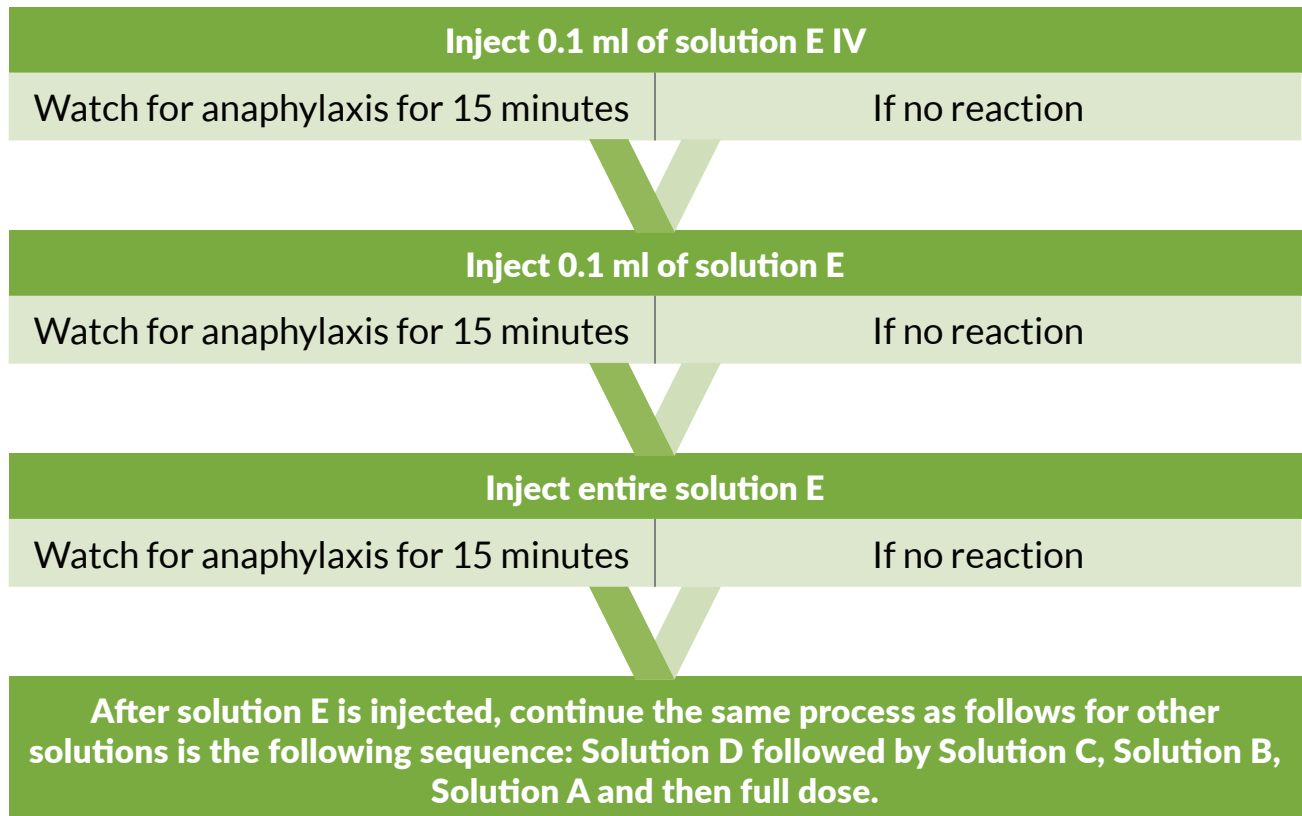
**Desensitization procedure only in case of severe anaphylaxis reaction to ASV** with shock and generalised anasarca after injection of very few ml of ASV usually less than 5 ml of diluted ASV.

- Change the batch of ASV
- Pre-medication: Administer Inj. Hydrocortisone 100 mg I.V. and Inj. Adrenaline 0.5 ml subcutaneously/ intramuscularly (± Promethazine)

**Table 1: Steps of dilution of ASV**

Steps of dilution	Instructions	Total Volume	Solution	Dilution
1.	Dilute 1 ml of ASV in a vial with 10 ml of normal saline	10 ml	A	
2.	1ml of solution A + 9 ml of saline	10 ml	B	1: 10
3.	1ml of solution B+ 9 ml of saline	10 ml	C	1: 100
4.	1ml of solution C + 9 ml of saline	10 ml	D	1: 1000
5.	1ml of solution D + 9 ml of saline	10 ml	E	1: 10,000

After dilution and preparation of Solution E,





# MANAGEMENT NEUROTOXIC (NEUROPARALYTIC) ENVENOMATION

Anti snake venom treatment alone cannot be relied upon to save the life of a patient with bulbar and respiratory paralysis. Administer following in addition:

1. Oxygen
2. Assisted ventilation. If the patient has evidence of bulbar or respiratory paralysis, insert endotracheal tube with the help of the anesthesiologist, if available or by a trained medical personnel or use laryngeal mask airway (LMA). If there is evidence of respiratory failure, assist ventilation manually by anaesthetic bag or mechanical ventilator. The duration of mechanical ventilation in snakebite victims is usually short since neuroparalysis reverses quickly with prompt administration of ASV. Manual ventilation (self ventilating anaesthetic bag) is also effective if mechanical ventilator is not available. Prolonged assisted ventilation with room air or oxygen is followed by complete recovery in case of Guillain-Barre syndrome and delayed neuropathy following snakebite.
3. Administer 'Atropine Neostigmine (AN)' schedule described as below. Give one dose of "AN" injection before transferring to the higher centre. Rapid deterioration of Cobra bite neurotoxic syndrome may kill the patient on the way during transfer. **Some patients go into a deep coma state but recover completely. Hence, diagnosis of brain death should not be considered. Do not give AN in case of confirmed krait bite.**
4. **Initial dose of ASV is administered over 1 hour.** If ASV not available refer to a higher facility where ASV is available or if no improvement after initial dose.

## ATROPINE NEOSTIGMINE (AN) DOSAGE SCHEDULE

- Atropine 0.6 mg followed by neostigmine (1.5mg) to be given IV stat and repeat dose of neostigmine 0.5 mg with atropine every 30 minutes for 5 doses (In children, Inj. Atropine 0.05 mg/kg followed by Inj. Neostigmine 0.04 mg/kg Intravenous and repeat dose 0.01 mg/kg every 30 minutes for 5 doses). A fixed dose combination of Neostigmine and glycopyrolate IV can also be used.
- Thereafter to be given as tapering dose at 1 hour, 2 hour, 6 hours and 12 hour. Majority of patients improve within first 5 doses. Observe the patient closely observed for 1 hour to determine if the neostigmine is effective. After 30 minutes, any improvement should be visible by an improvement in ptosis. Positive response to "AN" trial is measured as 50% or more recovery of the ptosis in one hour.
- Stop Atropine neostigmine (AN) dosage schedule if:
  - ◆ Patient has complete recovery from neuroparalysis. Rarely patient can have recurrence, carefully watch patients for recurrence.
  - ◆ Patient shows side effects in the form of fasciculations or bradycardia.
  - ◆ If there is no improvement after 3 doses.
- Improvement by atropine neostigmine indicates Cobra bite. A few Nilgiri Russel's viper bites victims also improve with this regimen.
- If there is no improvement after 3 doses of atropine neostigmine, this indicates probable Krait bite. Krait affects pre-synaptic fibres where calcium ion acts as neurotransmitter. Give Inj. Calcium gluconate 10ml IV (in children 1-2 ml/kg (1:1 dilution) slowly over 5-10 min every 6 hourly and continue till neuroparalysis recovers which may last for 5-7 days.

# MANAGEMENT OF VASCULOTOXIC SNAKEBITE

1. Strict bed rest to avoid even minor trauma.
2. Screen for hematuria, hemoglobinuria, myoglobinuria by Dipstick method. Dipstick test is positive in all three presentations listed above. Centrifuged urine showing pink color indicates hemoglobinuria, clear supernatant (RBCs settle down as deposit) indicates myoglobinuria.
3. Closely monitor urine output and maintain 1 ml/kg/h urine output.
4. If the patient is bleeding severely irrespective of full dose of ASV or is already seriously anaemic give transfusion of blood or fresh frozen plasma or transfer where facility is available.
5. Prompt recognition of organ dysfunction and immediate intervention may reverse organ impairment and improve the outcome.

## VOLUME REPLACEMENT IN SNAKE BITE

If the patient has intravascular volume depletion, indicated by supine or postural hypotension, or empty neck veins, proceed as follows:

1. Establish intravenous access.
2. Give fluid challenge: In adult patient 200 ml in saline in 5 minutes first, check BP response, if positive additional fluid given over 30 min or until the jugular venous pressure/central venous pressure has risen to 8-10 cm above the sterna angle (with the patient propped up at 45°).

3. Observe the patient closely while this is being done. The fluid challenge must be stopped immediately if pulmonary oedema develops.

## FORCED ALKALINE DIURESIS (FAD)

If urine output does not improve or dipstick positive for blood give a trial of FAD **within first 24 hours of the bite** to avoid pigment nephropathy leading to acute tubular necrosis (ATN). **Delayed FAD has no role.** Sequence of FAD in adults is as follows:

- i. Inj. Frusemide 40 mg IV stat
- ii. Inj. Normal saline 500 ml + 20 ml of  $\text{NaHCO}_3$  over 20 minutes
- iii. Inj. Ringer's lactate 500 ml + 20 ml of  $\text{NaHCO}_3$  over 20 minutes
- iv. Inj. 5% dextrose 500 ml + 10 ml of Potassium Chloride over 90 minutes
- v. Inj. Mannitol 150 ml over 20 min
  - ◆ Whole cycle completes in 2 h 30 min and urine output of 3 ml/min is expected.
  - ◆ **If patient responds to first cycle continue for 3 cycles.** FAD converts oliguria into polyuria and avoid ATN and acute kidney injury needing dialysis in more than 75% patients.
  - ◆ **If there is no response to furosemide discontinue FAD** and refer patient immediately to a higher center for dialysis.

## DETECTION AND MANAGEMENT OF HYPERKALEMIA

Hyperkalaemia (>7 mmol/l or hyperkalaemic ECG changes- tall peaked T waves, prolonged P-R interval, absent P wave, wide QRS complexes):

1. Give 10 ml of 10% calcium gluconate intravenously over 2 minutes (with ECG monitoring if possible) repeated up to 3 times.
2. Give 50 ml of 50% dextrose with 10 units of soluble insulin intravenously
3. Sodium bicarbonate 40 ml of 8.4% by slow intravenous infusion and Salbutamol aerosol by inhaler may also be used.

## MANAGEMENT OF SEVERE ACIDOSIS

If the patient is hypotensive and profoundly acidotic (deep sighing “Kussmaul” respirations, very low plasma bicarbonate levels or very low pH <7.10, administer sodium bicarbonate:

1. Calculate bicarbonate deficit
2. Administer 2-3 ampoules (40 ml of 8.4% sodium bicarbonate equivalent to 1 mmol/ml) in 55 dextrose water or half of the calculated deficit can be replaced in 3-4 hours. **Caution:** Intravenous bicarbonate may precipitate profound hypocalcaemia and seizures, especially in patients with rhabdomyolysis.
3. Severe acidosis in snakebite is usually associated with acute renal failure. Volume expansion by sodium bicarbonate can cause fluid overload. If no clinical improvement dialysis is indicated.

## INDICATIONS FOR DIALYSIS

- Absolute value of Blood urea >130 mg/dl (27 mmol/L) (BUN 100 mg/dl), Sr. Creatinine > 4 mg/dl (500 µmol/L) OR evidence of hypercatabolism in the form of daily rise in blood urea 30 mg/dl (BUN > 15), Sr. Creatinine > 1 mg/dl, Sr. Potassium > 1 mEq/L and fall in bicarbonate >2 mmol/L
- Fluid overload leading to pulmonary oedema
- Hyperkalaemia (>7 mmol/l or hyperkalaemic ECG changes- tall peaked T waves, prolonged P-R interval, absent P wave, wide QRS complexes)
- Unresponsive to conservative management.
- Uremic complications – encephalopathy, pericarditis.
  - ◆ Haemodialysis is preferable in cases of hypotension or hyperkalaemia. Peritoneal dialysis can be performed at a secondary health care center. Continuous renal replacement therapies and intermittent hemodialysis are equivalent in patients with severe sepsis and acute renal failure because they achieve similar short-term survival rates.
  - ◆ Continuous therapies are recommended to facilitate management of fluid balance in hemodynamically unstable patients. An efficient dose for continuous renal replacement therapy would be 20 to 25 mL/kg/h of effluent generation.

## IN CASE OF SHOCK, MYOCARDIAL DAMAGE

1. Correct hypovolaemia with colloid/crystalloids, controlled by observation of the central venous pressure.
2. Infusion of isotonic crystalloids or albumin, with boluses of up to 20 ml/kg for crystalloids (or albumin equivalent) over 5 to 10 min (in children over 30 min) titrated to reversing hypotension, increasing urine output, and attaining normal capillary refill, peripheral pulses and level of consciousness without inducing lung crepitations or hepatomegaly.
3. If hepatomegaly or rales develop, initiate inotropic support with dopamine or dobutamine. If patient doesn't respond to fluid resuscitation, inotropic support must be given.
4. In sepsis, noradrenaline is the inotropic agent of choice. Treat patients with hypotension associated with bradycardia with atropine.
5. **For coagulopathy** – in case of prolonged CT, PT, aPTT administer fresh frozen plasma (FFP) infusion. Associated low platelets indicates consumptive coagulopathy and disseminated intravascular coagulopathy (DIC). To confirm fibrinogen level FDP should be estimated. Low fibrinogen and high FDP will require fibrinogen/FFP supplementation. Bleeding leads to anaemia, PCV of 30% must be maintained, therefore, measure serial PCV every 4 – 6 h depending upon bleeding severity of patients. If PCV is lower than 30 needs blood transfusion/PCV transfusion.
6. Avoid intramuscular injections.
7. FFP administration after ASV administration results in more rapid restoration of clotting function in most patients, but no decrease in discharge time. Early FFP administration (< 6-8 h) post-bite is less likely to be effective. Administer 10-15 ml/kg of FFP within over 30–60 min within 4 hours of ASV administration. The aim should be a return of coagulation function, as defined by an INR of < 2.0, at 6 h after ASV administration was commenced. Non-response to FFP can occur with use of FFP that has low activity of FV and FVIII, because of either poor storage or premature thawing (> 24 hours) prior to administration.

**Heparin** is ineffective against venom-induced thrombosis and may cause bleeding on its own account. It should never be used in cases of snakebite. **Antifibrinolytic agents** are not effective and should not be used in victims of snakebite.

# MANAGEMENT OF SEVERE LOCAL ENVENOMING

1. Local necrosis, intracompartmental syndromes and even thrombosis of major vessels is more likely in patients who cannot be treated with ASV.
2. Surgical intervention may be needed but the risks of surgery in a patient with consumption coagulopathy, thrombocytopenia and enhanced fibrinolysis must be balanced against the life-threatening complications of local envenoming.
3. Give prophylactic broad-spectrum antimicrobial treatment for cellulitis after completion of first 10 vials of ASV) is as following:

Inj. Amoxicillin+ clavulanic acid 1.2 g IV thrice daily for first 7 days then switch to oral therapy Tab. Amoxicillin+clavulanic acid 625 mg three times a day for further 3-7 days; In children, the dose is 100 mg/Kg/day in three divided doses intravenously; for oral therapy, the dose is 50 mg/kg/day in three divided doses. Reduce dose of Amoxicillin+ clavulanic acid and Ceftriaxone in case of acute kidney injury due to Viper bites.

Alternatively Inj Ceftriaxone 1 g IV twice daily (in children the dose is 100 mg/kg/day in two divided doses) for 7 days.

- ◆ Inj. Metronidazole 400 mg IV infusion thrice daily for 7 days; in children- 30 mg/kg/day in 3-4 divided doses.





# RECOVERY PHASE

Observation of the response to adequate dose of anti snake venom:

- Response to infusion of ASV is marked by normalization of blood pressure. Within 15–30 min bleeding stops, though coagulation disturbances may take up to 6 h to normalize.
- Neurotoxic envenoming of the postsynaptic type (Cobra bites) begins to improve within the first 30 min, but patients may require 24–48 h for full recovery. Envenoming with presynaptic toxins (Kraits and sea snakes) do not respond in this way usually takes a considerable time to improve. Recovery of respiratory muscles is reflected by improvement of neck flexors where flexing the neck against gravity indicates timing to wean off ventilation. Prophylactic antibiotics are unnecessary.
- Nausea, headache and generalized aches and pains may disappear very quickly.
- In shock patients, blood pressure may increase within the first 30-60 minutes and arrhythmias such as sinus bradycardia may resolve.
- Active haemolysis and rhabdomyolysis may cease within a few hours and the urine returns to its normal colour. However, red colour urine may persist for several days in spite of adequate ASV treatment, does not require further ASV.
- Patient in deep coma recover fully provided there is no hypoxic brain damage. Autonomic dysfunctions are transient and don't need treatment. Sometimes treatment might be harmful e.g. treating with antihypertensive drugs to lower the increased blood pressure due to sympathetic hyperactivity.



# OTHER MEASURES

1. Clean the bitten site with povidone-iodine solution, but do not apply any dressings.
2. Leave blisters alone. Allow them to break spontaneously and heal. If there is local necrosis, excise and apply saline dressings. Surgical decompression may be necessary in some cases.
3. Administer booster dose of Tetanus toxoid injection, if not vaccinated earlier or vaccination history is not reliable after correction of coagulopathy.
4. For mild pain, in adults Paracetamol 500-1000 mg (in children 10-15 mg/kg) every 4-6 hourly orally. Do not use aspirin or other non steroidal anti-inflammatory drugs (NSAIDs). In case of severe pain in adults, Tab. Tramadol 50 mg or Inj. Tramadol 50 mg IV and in children Ibuprofen cautiously 5-10 mg/kg/dose every 8 hourly. Avoid drugs such as sedatives, pethidine, morphine and neuromuscular blocking agents **in neurotoxic envenomation. A deeply sedated patient may create confusion regarding level of neuro-paralysis.**
5. Maintain hydration and nutrition.
6. If there is local pain and spreading oedema, elevate the affected limb and allow it to rest on a sand bag.

## SURGICAL PROCEDURES IN SNAKEBITE

### Debridement of necrotic tissue

Wait for 5-7 days before commencing debridement of necrotic tissue in order to specify the line of demarcation between viable and non-viable tissue. Refer patients requiring

skin grafting and amputation of a necrotic digit/limb to a Surgeon after completion of ASV treatment.

## Compartmental syndrome

### Clinical features of a compartmental syndrome (5 'P'):

- Pain (severe)
- Pallor
- Paraesthesia
- Pulselessness
- Paralysis or weakness of compartment muscle.

### Criteria for fasciotomy in snakebite limb

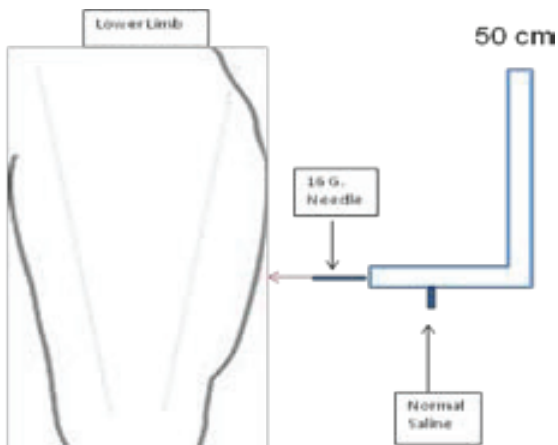
- Clinical evidence of an intracompartmental syndrome
- Intra-compartmental pressure >40 mmHg of normal saline (in adults). Compartment pressure can be measured bed side using 3 way cannula – 16 G needle attached to one end, BP apparatus attached to 2nd end and saline infusion on 3rd side.
- This can be confirmed by vascular Doppler and rising CPK in thousands. Timely fasciotomy decreases the need for repeated dialysis.
- Haemostatic abnormalities have been corrected (with ASV or without clotting factors), otherwise the patient may bleed to death.

**Early treatment with anti snake venom (ASV) remains the best way of preventing irreversible muscle damage.** Anti snake venom may also be helpful in reducing severe limb oedema (Rojnuckarin et al., 2006). Corticosteroids should not be used as they are not effective in ameliorating local effects of envenoming and carry the risk of side-effects (Reid et al., 1963; Nuchprayoon et al., 2008). The limb can be raised in the initial stages to see if swelling is reduced. However, this is controversial as there is no trial evidence to support its effectiveness.

- Persistent moderate swelling of the limb after viper bite can be successfully managed by systemic broad spectrum antibiotics and repeated Magnesium Sulphate compresses (in the layers of wet bandage, changed 2-3 times a day) for 5-7 days.

Compartment pressure measurement procedure is shown in Figure 9.

**Figure 9: Compartment pressure measurement procedure.**



Insert a 16 no. needle in the suspected compartment at a depth of 1 cm and connect to a simple tubing irrigated with normal saline. Measure rise in the saline column in the tubing. A rise more than 40 cm of saline corresponds to 30 mm Hg of lymphatic/ capillary pressure and is suggestive of compartment pressure. This necessitates fasciotomy procedure.

- Refer the patient to a surgical specialist but it is worth the treating clinician ensuring that objective criteria are used to assess the actual intracompartmental pressure in the limb (A2).



# DISCHARGE

If no symptoms and signs develop after 24 hours the patient can be discharged. Keep the patient under observation for 48 hours if ASV was infused.

## FOLLOW-UP

1. A snakebite victim discharged from the hospital should continue to be followed up.
2. At the time of discharge patient should be advised to return to the emergency, if there is worsening of symptoms or signs such as evidence of bleeding, worsening of pain and swelling at the site of bite, difficulty in breathing, altered sensorium, reduced or increased urine output etc.
3. The patients should also be explained about the signs and symptoms of serum sickness (fever, joint pain, joint swelling) which may manifest after 5-10 days.

## REHABILITATION

1. In patients with severe local envenoming, maintain limb in a functional position. For example, in the leg, equinus deformity of the ankle should be prevented by application of a back slab.
2. Start simple exercises while the patient is still in hospital for restoration of normal function in the bitten part. Conventional physiotherapy after discharge from hospital may accelerate functional recovery of the bitten limb. Give a time table of rehabilitation activities.
3. Functional effects of local envenoming range from persistent stiffness and induration to severe deformity, tissue loss, especially dermonecrosis, requiring skin grafting and gangrene requiring debridement and amputation.





# REFERRAL CRITERIA

Vasculotoxic envenomation	Neurotoxic Envenomation
<p>If no ASV is available, transfer to a hospital (where ASV availability is confirmed over the phone).</p> <p>If 20 WBCT is “not clotted” after loading dose of 10 vials of ASV as in case of Viper bite.</p> <p>If patient is continuing to bleed even after full dose of ASV transfer to a tertiary care medical college or higher level of health facility.</p> <p>Progressive septicaemia</p> <p>Signs of kidney injury or abnormal kidney function test transfer to a tertiary care medical college or higher level of health facility.</p>	<p><b>Progressive neuromyotonia</b> - transfer with life support in ambulance for mechanical ventilation (<i>Battery operated Transport Ventilator</i>) operated by qualified staff or <i>ambu bag as a last resort</i> to a hospital where facility of a ventilator is available.</p> <p>The key criteria to determine need for mechanical ventilation is the ‘neck lift’ to elicit broken neck sign.</p> <p>Check frequently on patient’s ability to perform a neck lift.</p> <p>If they are able to carry out the neck lift action continue treatment until recovery in the PHC.</p> <p>If patient cannot perform neck lift action, immediately refer the patient to a hospital with a mechanical ventilator.</p> <p>Very young children may not be able to follow commands for neck lift.</p> <p>Other tests which indicate descending paralysis are declining single breath count, pooling of saliva.</p> <p>Oxygen saturation &lt; 90% using pulse oximetry indicates requirement for ventilator support.</p>

**Figure 10: “Broken neck” sign observed in a 14-year-old girl bitten by a Russell’s viper in India. Envenoming by cobras, kraits and—in some areas—by Russell’s viper frequently leads to progressive descending paralysis. In this case, neuroparalysis persisted for five days despite antivenom treatment, but without progression toward respiratory failure. H. S. Bawaskar. doi:10.1371/journal.pntd.0000603.g002**



## INSTRUCTIONS WHILE REFERRING

- Inform the need for referral to the patient and/caregiver (family member or the accompanying attendant).
- Give prior intimation to the receiving centre using available communication facilities.
- Arrange for an ambulance. Call Emergency helpline 102/108 etc. Transport in an ambulance equipped with transport ventilator. If ventilator is not available tight-fitting face mask connected to an anaesthetic (Ambu) bag should be available. However, do not waste time to get an ideal ambulance. Motorbike is a practical alternative in rural areas for rapid transport but third person must sit behind the patient to support on bike.
- If ASV is not available at First contact centre transfer to the nearest health facility where ASV is available after confirmation by telephone.
- Transfer to a higher health facility (Secondary Care Hospital or Tertiary Care Hospital) where facilities for mechanical ventilator and dialysis are available, **if required after completion of ASV infusion only.**

- During transfer, continue life-supporting measures and provide airway support with the help of an accompanying staff, if required.
- Do not insert nasogastric tube routinely. It is indicated only if victim has obtunded mentation and or gag reflex is poor. If this is not possible give head up position to victim during transport to avoid aspiration of gastric contents.
- Send the referral note with details of treatment given clearly mentioning the clinical status at the time of referral.

See Annexure II for management of snakebite at various levels of healthcare.



# GUIDELINE DEVELOPMENT PROCESS

An Indian guideline on the management of snakebite has been evolved through intensive discussions and workgroups amongst 12 invited experts from India, plus a review and discussion of relevant research publications and papers (list of experts enclosed).

The invited experts comprised a select group of professionals drawn from the fields of clinical medicine, toxicology, & pharmacology. The participants came from a wide variety of leading institutions, States, representing different levels of healthcare in the public as well as private sector.

Facilitator	Dr. Sangeeta Sharma, Professor & Head, Department of Neuropsychopharmacology Institute of Human Behaviour and Allied Sciences, Delhi
Co-Facilitator	Dr. Ashoo Grover Scientist , Indian Council for Medical Research , New Delhi
Expert	Dr. D. B. Kadam Professor & Head, Dept. of Medicine, B. J. Medical College, Pune  Dr. Himmat Bawaskar, Bawaskar Hospital & Research Centre, Raigad, Maharashtra  Dr. Dayal Bandhu Majumdar Senior MO, National Medical College, Kolkata  Dr. S. Ragunathanan Professor & Head Poison Centre, Madras Medical College

	Dr. Arvind Mathur Professor , Jhodhpur Medical College  Dr. Rakesh Lodha Additional Professor, Paediatrics, AIIMS, New Delhi  Dr. Anurag Agrawal Assistant Professor, Paediatrics, MAMC, New Delhi  Dr. J. N. Srivastava Advisor, Quality Improvement, NHSRC
Physician	Dr. Rajiv Kapil Consultant Physician, Lal Bahadur Shastri Hospital, Delhi
Private Practitioner	Dr. Sadanand Raut Vighnagar Nursing Home, Narayangaon, Pune
Paramedic/Nurse/ Rehabilitation Experts	Mrs. Sunita Bisht, ICU Nurse, GTB Hospital Delhi
Primary Care Practitioners	Dr. Sanjay Bajaj, SMO, State Health Services, Himachal Pradesh
ASV Manufacturer	Dr. M.V. Khadilkar Premium Laboratories, Pune
Project Manager/Quality Professional	Dr. Nikhil Prakash Senior Consultant, Quality Improvement, NHSRC

The guidelines have been reviewed by experts having ground experience of handling snakebite cases including those from Indian Society of Toxicology and manufacturer of the antsnake venom.

Dr Jeevan Kuruvilla, Gandhi Health Centre, Bardwah

Dr. U. B. Das, Directorate General of Health Services, MoHFW, GOI

Dr Omesh Bharti, Government of Himachal Pradesh

Dr DP Punde, Senior Physician, Punde Hospital, Nanded, Maharashtra

Dr Joseph K Joseph, President Toxicological Society of India, Kochi

Dr VK Himgire, Nanded

The guidelines have also been reviewed by Global Snakebite Initiative (GSI) group. The Global Snakebite Initiative is an internationally-active non-profit organisation, registered in Australia, and led by snakebite experts who are dedicated to improving access to good quality, robustly tested, safe, effective antivenoms in the world's poorest communities.





# REFERENCES

- A. Module on the “Management of Snakebite Cases” For Medical Officers. Developed By Public Health Branch of the Directorate of Health Services & Institute of Health & Family Welfare Kolkata. Department of Health & Family Welfare. Government of West Bengal.
- A2 Snakebite Management in Asia & Africa Guidelines produced by: Pakistan Medical Research Council, Pakistan Medical Association; National Program for Family Planning and Primary Health Care and Indian Journal of Emergency Pediatrics, 2011.
- Alirol E, Sharma SK, Bawaskar HS, Kuch U, Chappuis F. Snake Bite in South Asia: A Review. *PLoS Negl Trop Dis* 2010; 4(1): e603. doi:10.1371/journal.pntd.0000603.
  - Atkinson, JP, Waldmann, TA, Stein, SF, et al. Systemic capillary leak syndrome and monoclonal IgG gammopathy; studies in a sixth patient and a review of the literature. *Medicine (Baltimore)* 1977; 56:225.
  - Bawaskar HS, Bawaskar PH and Bawaskar Parag H. Premonitory signs and symptoms of envenoming by common krait (*Bungarus caeruleus*). *Tropical Doctor* 2014, Vol. 44(2) 82–85.
  - Bawaskar HS, Bawaskar PH, Punde DP, Inamdar MK, Dongare RB and Bhoite RR. Profile of snakebite envenoming in rural Maharashtra, India. *J Assoc Physicians India* 2008; 56: 88–95.
  - Bawaskar HS, Bawaskar PH. Call for a global snake-bite control and procurement of funding [letter]. *Lancet*. 2001; 357:1132–1133.
  - Bawaskar HS. Aphasia in a farmer after viper bite. *Lancet* Vol 360 November 23, 2002. [www.thelancet.com](http://www.thelancet.com)

- Bawaskar HS. Snake bite poisoning: A neglected life-threatening occupational hazard. *Indian J Crit Care Med* 2014; 18: 123-4.
- de Silva HA, Pathmeswaran A, Ranasinha CD, Jayamanne S, Samarakoon SB, Hittharage A, et al. Low-Dose Adrenaline, Promethazine, and Hydrocortisone in the Prevention of Acute Adverse Reactions to Antivenom following Snakebite: A Randomised, Double-Blind, Placebo-Controlled Trial. *PLoS Med* (2011) 8(5): e1000435. doi:10.1371/journal.pmed.1000435.
- Deshmukh Vinod S, Motghare Vijay M, Gajbhiye Dharmendra, Birajdar SV, Deshpande Rushikesh, Pise Harshal, Jaykare Swapnil. Study on acute adverse drug reactions of anti snake venom in a rural tertiary care hospital *Asian J Pharm Clin Res*, Vol 7, Issue 5, 2014, 13-15.
- Deshpande Prabhakar Rushikesh, Motghare Vijay Motiram, Padwal Sudhir Laxman, Pore Rakesh Ramkrishna, Bhamare Chetanraj Ghanshyam, Deshmukh Vinod Shivaji, Pise Harshal Nutan. Adverse drug reaction profile of anti-snake venom in a rural tertiary care teaching hospital. *Journal of Young Pharmacists* 5 (2013) 41e45.
- Harris JB, Faiz MA, Rahman MR, Jalil MA, Ahsan MF, et al. Snakebite in Chittagong Division, Bangladesh: a study of bitten patients who developed no signs of systemic envenoming. *Trans R Soc Trop Med Hyg.* 2010 May;104(5):320-7. doi: 10.1016/j.trstmh.2009.12.006. Epub 2010 Jan 22.
- Jaideep C Menon and Joseph K Joseph. Complications of Hematotoxic snake bite in India. *Clinical Toxinology in Asia Pacific and Africa*, Springer Reference edited by P Gopalakrishna Kone 2015 p-209-232.
- Majumder D, Sinha A, Bhattacharya SK, Ram R, Dasgupta U, Ram A. Epidemiological profile of snakebite in South 24 Parganas district of West Bengal with focus on underreporting of snakebite deaths. *Indian J Public Health* 2014;58:17-21.
- Maurya PK, Kalita J, Paliwal VK, Misra UK. Manual AMBU ventilation is still relevant in developing countries. *QJM* 2008; 101: 990-991.
- Mohapatra B, Warrell DA, Suraweera W, Bhatia P, Dhingra N, Jotkar RM Rodriguez PS, Mishra K, Whitaker R, Jha P, for the Million Death Study Collaborators. Snakebite Mortality in India: A Nationally Representative Mortality Survey. *PLOS Tropical Neglected Diseases*. 2011. DOI: 10.1371/journal.pntd.0001018.

- Nayak KC, Jain AK, Sharda DP, Mishra SN. Profile of cardiac complications of snakebite. *Indian Heart J.* 1990; 42:185–8.
- Nuchprayoon I, Pongpan C, Sripaiboonkij N. The role of prednisolone in reducing limb oedema in children bitten by green pit vipers: a randomized, controlled trial. *Ann Trop Med Parasitol.* 2008; 102: 643-9.
- Poovazhagi Varadarajan, Thankavelu Shankaerlingam et al. Peripheral Locked in syndrome following snake envenomation. *Pediatric on call July- Sept 2013 Vol 10 issue 3.*
- Prakash S, Mathew C, Bhagath S, Locked in syndrome in snake bite. *J Assoc. Physicians India* 2008;56;121-122.
- Ramachandran S, Ganaikabahu B, Pushparajan K, Wijesekara J. Electroencephalographic abnormalities in patients with snakebites. *Am J Trop Med Hyg.* 1995;52:25–8.
- Reid HA, Chan KE & Thean PC. Prolonged coagulation defect (defibrination syndrome) in Malayan viper bite. *Lancet.* 1963; i: 621-626.
- Rojnuckarin P et al. A randomized, double-blind, placebo-controlled trial of antivenom for local effects of green pit viper bites. *Trans R Soc Trop Med Hyg.* 2006; 100: 879-84.
- Singh A, Goel S, Singh AA, Goel AK, Chhoker VK, Goel S, Naik SM, Kaur M. An epidemiological study of snakebites from rural Haryana. *Int J Adv Med Health Res* 2015;2:39-43.
- Smith E, Delargy M, Locked in syndrome. *BMJ* 2005; 330; 406-409
- Snakebite- the neglected tropical diseases. Editorial. *Lancet* 2015; 386:1110
- Suri V, Sharma N, Bhalla A, Mahi S. Ambu Bag - Basic Life Support Saves the Day. *Emergency Medicine* 2006; 23: 23-25.
- Sutherland SK, Coulter AR, Harris RD (1979) Rationalisation of first-aid measures for elapid snakebite. *Lancet* 1: 183–185.
- Warrell and WHO 2009 11-[Http://www.who.int/neglected \\_diseases.EB132\\_R7\\_ en.pdf](http://www.who.int/neglected_diseases/EB132_R7_en.pdf)).
- Warrell DA. Guideline for Management of Snakebite. World Health Organization 2010.



# ANNEXURE 1

## SNAKE BITE EXAMINATION PROFORMA

Name ..... Age ..... Sex M/F  
Address .....  
Date ..... Time of bite ..... Activity at time of bite .....  
Sleeping on floor bed ..... Yes/No ..... Cot ..... Yes/No ..... Mosquito net Yes/No  
Snake Seen Yes/No Killed Yes/No Specimen photo in mobile Yes/No  
Identification of snake in photos specimen as .....  
Confirmed specimen of snake .....

### Local site

Fangs marks ..... Active bleeding from fangs Yes/No Blood clot Yes/No  
Time of development of edema .....  
Extension of edema .....  
Regional lymphangitis .....  
Pain in abdomen ..... Vomiting .....  
Blood pressure ..... Pulse rate .....  
Active bleeding Gum/from abrasions/any other site  
**20WBCT on arrival**                      Clotted /Not clotted                      Time.....

Repeat 20WBCT                                          Clotted /Not clotted                                          Time.....

Repeat 20WBCT                                          Clotted /Not clotted                                          Time.....

**ASV administered .....** **Dose given .....** Vials Time.....

Repeat 20WBCT after ASV Clotted /Not clotted Time.....

### Progress after ASV

20WBCT at 1h ..... 2h ..... 3h ..... 6h ..... 12h ..... 18h ..... 24h .....

Progress INR ..... APTT .....

Blood urea ..... Serum creatinine .....

Urine ..... Haematuria /hemoglobinurea .....

Haemogram ..... Platelet count.....

Blood transfusion, if any .....

Fresh Frozen Plasma (FFP), if any .....

Dialysis, if any .....

### Compartment syndrome Present/Not present Neuroparalytic symptoms

Bilateral Ptosis ..... Ophthalmoplegia .....

Bulbar palsy .....

Respiratory rate ...../min sPO<sub>2</sub> .....% One minute count .....

### Muscle power on arrival

Upper limb ..... lower limb ..... Progress .....

Pelvic girdle .....

Reflexes Planter on arrival ..... Progress .....

Voice on arrival .....  
Distance between Inter teeth margin ..... On arrival ..... Progress .....  
Protrude of tongue in relation to teeth margin ..... On arrival ..... Progress .....  
Pupil size ..... Reacting to light ..... On arrival .....  
Progress after ASV total dose ..... After Repeat dose .....  
Intubation time ..... Ambu bag ventilation/ Mechanical ventilator

## Follow up

**Recovery time in days..... Total ASV dose given.....**  
**Blood transfusion given/not given FFP given/not given**  
**Dialysis days ..... Ventilations total days ..... Disability.....**  
**Hypoxic brain injury ..... Amputation of limb ..... Plastic surgery .....**





## ANNEXURE 2

# SNAKE BITE MANAGEMENT DIFFERENT LEVELS OF HEALTHCARE

## AT A PRIMARY HEALTH CARE CENTER (PHC)

### Patient Arrival & Assessment

1. Assess circulation, airway and breathing and deal with any life threatening symptoms on presentation.
2. Establish large bore intravenous access and start normal saline slow infusion.
3. Before removal of the tourniquet/ligatures, test for the presence of a pulse distal to the tourniquet. If the pulse is absent ensure a doctor is present before removal or ligatures.
4. **In case of clinically confirmed venomous bite, tourniquet should be removed only after starting of loading dose of ASV and keep Atropine Neostigmine injection ready.** In case of multiple ligatures, all the ligatures can be released in Emergency Room EXCEPT the most proximal one; which should only be released after admission and all preparations.
5. Carry out a simple medical assessment including history and simple physical examination – local swelling, painful tender and enlarged local lymph glands, persistent bleeding from the bite wound, blood pressure, pulse rate, bleeding (gums, nose, vomit, stool or urine), level of consciousness, drooping eyelids (ptosis) and other signs of paralysis. The Glasgow Coma scale cannot be used to assess the level of consciousness of patients paralyzed by neurotoxic venoms.
6. The snake, if brought, should be carefully examined and identified, if possible. (One smart phone photograph of the snake, dead or alive, if available, should be taken for confirmation by an expert).

7. Clotting test '20WBCT' in clean, new, dry, glass test tubes should be carried out to diagnose vasculotoxic envenomation. Report should be given as Clotted or Not Clotted. Never write Positive/negative. If clotted continue every 1 hour for the 1st 3 hours from the time of hospitalization and then 6 hourly for 24 hours. If a neurotoxic snakebite is confirmed, clotting test can be repeated after 6 hours. If not clotted administer anti snake venom (ASV).
8. Give analgesia by mouth if required: Paracetamol (acetaminophen) (adult dose 500 mg to 1 g maximum 4 g in 24 hours; children 10-15 mg/kg/dose (maximum 100mg/kg/day). Do NOT give aspirin or non-steroidal anti-inflammatory drugs which can cause bleeding and renal dysfunction.
9. Assess the need and feasibility of transporting the patient to a higher level of the health service (see A above).
10. If the necessary skills, equipment, antivenom and other drugs are available, give intravenous fluid to correct hypovolaemic shock. These skills include ability to diagnose local and systemic envenoming, set up intravenous infusion or intravenous injection, identify the early signs of anaphylaxis.
11. If the patient fulfils criteria for antivenom treatment, give ASV. If no ASV is available, transfer to a health facility where ASV is available.
12. Give premedication with Adrenaline 0.25 mg (0.1% solution) and in Children 0.005 mg/kg body weight of 0.1% solution subcutaneously except in hypertensive and patients with cardiovascular disease. Adrenaline is made ready in two syringes of 0.5mg (1:1000) for IM administration if symptoms of any adverse reaction appear. If symptoms do appear, ASV is temporarily suspended while the reaction is dealt with and then recommenced (for details see treatment of early ASV reactions).

If the patient has evidence of respiratory paralysis, give oxygen by mask or laryngeal mask airway (LMA), and intubate the patient and make arrangements for transfer to a higher facility accompanied by a Medical Officer carrying an Ambu bag, additional endotracheal tubes, oxygen, facemasks and basic drugs for resuscitation (Suri et al 2006; Maurya et al. 2008)

13. During the journey the endotracheal tube may slip into right bronchus leading to left lung collapse and right side pneumothorax may also occur. To prevent the tube being bitten, a mouth gag should be inserted. The tube may get obstructed due to secretions or kinking leading to cyanosis and resistance to

Ambu-ventilation. Then the tube should be pulled out immediately and Ambu-ventilation could be continued with a face mask.

14. Administer Atropine and Neostigmine before transferring to a hospital as recommended above.
15. It is assumed that assisted ventilation other than by a tight-fitting face mask connected to an anaesthetic (Ambu) bag will not be possible at this level.
16. Injection Tetanus Toxoid to be given after ruling out or correction of coagulopathy.
17. Patient should be placed under observation for 24 hours (even if the victim gives a history of a nonvenomous snakebite. The bite victim becomes so frightened and confused immediately after a bite, many a time gives false identification history). If no symptoms develop after 24 hours the patient can be discharged.
18. Discourage the use of ineffective and potentially harmful drugs such as corticosteroids, antihistamines, and heparin.



## Snake Bite Management at the District Hospital

Proceed as in PHC above in addition to the followings:

1. If ASV indicated and had not been given already start without any delay, do not wait for any test report.
2. Carry out a more detailed clinical and laboratory assessment including biochemical and haematological measurements, ECG or radiography, as indicated to get a baseline data.

3. If the patient is bleeding severely irrespective of full dose of ASV or is already seriously anaemic give transfusion of blood or fresh frozen plasma or transfer where facility is available.
4. Reassess analgesia (see B above) and, if required, consider giving Tramadol 50 mg orally. In case of severe pain administer Inj. Tramadol 50 mg IV. **Avoid pethidine or morphine in neurotoxic envenomation. A deeply sedated patient may create confusion regarding level of neuro-paralysis.**
5. Give tetanus toxoid booster (if not given already), to all snakebite victims provided coagulation is restored.
6. In case of cellulitis consider antibiotics, and consider surgical debridement of dead tissue.
7. If the patient has evidence of acute kidney injury (AKI), treat with dialysis. If this is not available, transfer to a specialized hospital. For details see Annexure.
8. If the patient has evidence of bulbar or respiratory paralysis, insert endotracheal tube with the help of the anesthesiologist if available or by a trained medical personnel or laryngeal mask airway (LMA). If there is evidence of respiratory failure, assist ventilation manually by anaesthetic bag or mechanical ventilator.
9. **Initial dose of ASV is administered over 1 hour. The first blood drawn from the patient should be typed and cross-matched, as the effects of both venom and ASV can interfere with later cross-matching.**
10. Atropine neostigmine “AN” challenge test is administered using 0.6mg of atropine IV first followed by 1.5 mg of neostigmine IV (Schedule described above). Rarely, if patient require more than 2nd dose of AN test. Stop after 3rd dose if there is no response. In Krait bite practice of continuing Neostigmine drip till ptosis persists beyond 24 h is not beneficial. Pre-synaptic blockage by Krait venom does not respond to AN injection.
11. If after 2 hours from the end of the first dose of ASV, the patient’s symptoms have worsened i.e. paralysis has descended further, a second full dose of ASV is given over 1 hour.

## Snake Bite Management at the Tertiary Care or Medical College

Proceed as in PHC and District hospital above in addition to the following:

1. In the ICU, the standard protocol should be followed during assisted ventilation and the patient should be monitored for all parameters including level of consciousness.

Avoid drugs such as sedatives, morphine and neuromuscular blocking agents. Some patients go into a deep coma state but recover completely. Hence, diagnosis of brain death should not be considered.

Recovery of respiratory muscles is reflected by improvement of neck flexors where flexing the neck against gravity indicates timing to wean off ventilation. Prophylactic antibiotics are unnecessary.

2. Multiple organ failure. Management is supportive, and prevention of organ damage in those at risk are therefore crucial. Aggressive early resuscitation, adequate antivenom therapy, excision of devitalized tissue and treatment of infection are important. Prompt recognition of organ dysfunction and immediate intervention may reverse organ impairment and improve the outcome.
3. If the patient has evidence of acute kidney injury peritoneal or haemodialysis or haemofiltration. Indications for dialysis as described above.
4. More advanced surgical management of local necrosis (e.g. split skin grafting).
5. More advanced investigations including bacterial cultures and imaging (CT scans) as indicated.
6. CNS complication and intracranial bleeding to be managed according to the standard practice. Neurosurgical opinion may be requested according to intracranial pathology. However, haemostatic abnormalities must be corrected.
7. **Coma, autonomic dysfunctions.** Patient in deep coma recovers fully provided there is no hypoxic brain damage. Autonomic dysfunctions are transient and don't need treatment. Sometimes treatment might be harmful e.g. treating with antihypertensive drugs to lower the increased blood pressure due to sympathetic hyperactivity.
8. **Uncommon complications** such as hepatic dysfunction, pancreatitis, endocrine insufficiency and deep venous thrombosis should be managed according to the standard practice.
9. Implement rehabilitation by physiotherapists.



# QUALITY STANDARDS FOR MANAGEMENT OF SNAKEBITE

Standard	Statement
Quality Standard 1 <b>Observation</b>	All patients reporting to health facility with history of snake bite/ suspected snake bite are kept under clinical observation for at least 24 hours irrespective of severity of envenomation.
Quality Standard 2 <b>Diagnosis</b>	For all patients with sign of envenomation, 20-minute whole blood clotting (20 WBCT) test is done immediately after admission, repeated hourly for first 3 hours.
Quality Standard 3 <b>Initiation of ASV Therapy</b>	All patients with Snakebite, confirmed clinically with neuromuscular symptoms or non clotting 20 WBCT are immediately provided Anti Snake Venom therapy
Quality Standard 4 <b>Care of Neurotoxic envenomation</b>	All snake bite patients presenting with neuromuscular symptoms are immediately admitted to ICU or referred to higher facility with ICU.
Quality Standard 5 <b>ASV Dose</b>	All patients with confirmed diagnosis of snakebite are administered 10 vials of polyvalent ASV within 30 min of confirmation for indication/admission.
Quality Standard 6 <b>Atropine Neostigmine Therapy</b>	All patients with presentation of Neurotoxic (neuromuscular) Envenomation are provided AN (Atropine-Neostigmine) therapy as per schedule.
Quality Standard 7 <b>ASV Availability</b>	24X7 Availability of Anti snake venom is ensured in designated health care facilities.
Quality Standard 8 <b>Management of ASV Reactions</b>	ASV reactions are monitored and treated and managed as per protocol.
Quality Standard 9 <b>Competence</b>	Health care provider is competent and confident to manage snakebite cases.
Quality Standard 10 <b>Promotion</b>	Health facility promotes the information and education regarding scientific management of snakebite in community.

Quality Standard 1: Admission and Observation of Suspected Snakebite Cases	
<b>1. Statement</b>	All patients reporting to health facility with history of snake bite/ suspected snake bite are kept under clinical observation for at least 24 hours irrespective of severity of envenomation
<b>2. Rationale</b>	Presenting Sign and symptoms of snake bite may be confusing the time of arrival to a health facility. Some patient with dry bite or no bite may mimic like a snake bite case due anxiety and sympathetic over activity. On the other hand, some cases their may be no sign or sign similar other common disease (Acute abdomen in case on occult snake bite. The definitive signs and symptoms of snake bite may manifest later. So it is judicious to keep all cases of suspected snake bit under observation at least for 24 hours.
<b>3. Quality Measure</b>	
<b>3a. Structure</b>	Evidence of availability of function indoor facilities and 24X7 nursing care at the facilities designated to treat snake bite.
<b>3b. Process</b>	Proportion of suspected snake bite cases reported to health facility that were kept under observation for at least 24 hours.  <b>Numerator</b> - Total no patients with suspected snakebite kept under observation for 24 hours  <b>Denominator</b> - Total no. of suspected snake bite cases reported to the facility.
<b>3c. Outcome</b>	Proportion of Snake bite cases re-admitted for sign and symptoms after early discharge (Before 24 hours)  <b>Numerator</b> - Total No. of Patients readmitted after early discharge (before 24 hours of reporting)  <b>Denominator</b> - Total No. of suspected Patients discharged before 24 hrs of reporting)
<b>4. What Quality Measure means for each audience</b>	<b>Service Provider</b> - Ensure that all the suspected cases of snake bite are kept under observation at least for 24 hours  <b>Health Administrator</b> - Ensure that adequate indoor facility and nursing care is available at the designated facility.  <b>Patient and Community</b> - Patient or their attendant should not not request hospitals staff for early discharge even if snake bite is not confirmed.
<b>5. Data Source</b>	Emergency Register  Indoor Register
<b>6. Definitions</b>	Health Facility- Any Public health facility with provision of 24X7 indoor care (PHC, CHC, District Hospitals , Tertiary care Centers/ Teaching Hospitals) or their equivalent in private sector



Quality Standard 2: Lab Diagnosis for Snakebite	
<b>1. Statement</b>	For all patients with sign of envenomation, 20-minute whole blood clotting (20 WBCT) test is done immediately after admission, repeated hourly for first 3 hours.
<b>2. Rationale</b>	20 Minute WBC test is the most definitive test to identify any venom-induced consumption coagulopathy. The test will help care provider in confirming the diagnosis and differentiating between neurotoxic and vasculotoxic snakebite. The test requires minimal resources (A syringe and a glass test tube) and skills so can be performed in at all level of facilities.
<b>3. Quality Measure</b>	
<b>3a. Structure</b>	Evidence of necessary consumables eg. Syringe and glass test tube is available and service providers are skilled for performing the test.
<b>3b. Process</b>	Proportion of suspected snake bite cases Immediately provided the 20 WBC Test after admission out of total suspected snake bite cases admitted  <b>Numerator-</b> Total no patients provided immediate 20 WBC test after admission  <b>Denominator-</b> Total no. of suspected snake bite cases admitted in the facility.
<b>4. What Quality Measure means for each audience</b>	Service Provider – Ensure that 20 WBC test is conducted as early as possible after admitting the snakebite patient and then repeated hourly for next three hours to rule out coagulopathy. Ensure nursing/ paramedic staff are skilled to perform the test. A work instruction regarding this can be displayed at nursing station  Health Administrators/ QA Officials -Monitor the related indicators. Periodic review of case records (Clinical Audit)  <b>Patient and Community</b> – Cooperate with service providers and understand the need of reparative drawing of blood and conducting the test.
<b>5. Data Source</b>	Clinical Case records/ Bed Head Tickets of the sake bite cases
<b>6. Definitions</b>	20 WBCT- (20 Minute whole blood clotting test) performed by placing 2 ml freshly drawn venous blood in a small glass tube at ambient temperature and observing for coagulation after 20 minutes by tilting the test tube. “Not Clotted” blood is confirmation of venom induced consumption coagulopathy.

<b>Quality Standard 3: Initiation of Anti Snake Venom Therapy</b>	
<b>1. Statement</b>	All patients with Snakebite, confirmed clinically with neuroparalytic symptoms or non clotting 20 WBCT are immediately provided Anti Snake Venom therapy
<b>2. Rationale</b>	Anti Snake Venom therapy is the only specific treatment for snakebite cases. Once snakebite case confirmed based on clinical sign and symptom of envenomation or by lab test (20 WBCT) , ASV therapy should be started immediately without any other consideration. There are no contradictions to ASV. Early administration of ASV will stop the further progress of envenomation and even may reverse systemic envenomation abnormalities.
<b>3. Quality Measure</b>	
<b>3a. Structure</b>	Evidence of adequate stock of ASV is readily available for use and clinical staff is ASV therapy
<b>3b. Process</b>	Proportion confirmed snake bite cases initiated the anti snake venom therapy immediately out of total confirmed cases of snake bite cases attended  Numerator- Total no of patients initiated anti snake bite therapy immediately (not more than 10 Minutes) after confirmation of envenomation.  Denominator- Total no. of confirmed snakebite cases attended
<b>3c. Outcome</b>	Proportion of snake bite cases where mortality or severe morbidity occurred due to delay in initiation of Anti snake Venom therapy  Numerator- Total no. of cases where mortality or severe morbidity occurred due to delay in initiation of Anti snake venom  Denominator – Total no. of snake bite cases treated
<b>4. What Quality Measure means for each audience</b>	Service Provider – Ensure that adequate stock of ASV is readily accessible for use, including in night hours when pharmacy or drug store may be closed. Protocol regarding the immediate initiation of is effectively communicated and monitored.  Health Administrators/ QA Officials - Monitor the related indicators. Periodic review of case records (Clinical Audit)  Patient and Community – Insist on initiation of ASV therapy once diagnosis is confirmed. Community representative in rogi kalyan samities can periodically monitor the availability of anti snake venom in the hospital.
<b>5. Data Source</b>	Clinical Case records/ Bed Head Tickets of the sake bite cases  Clinical Audit Records
<b>6. Definitions</b>	Anti snake Venom Therapy – Intravenous infusion of Polyvalent / Snake specific Anti snake venom with minimum dose of 100 ml.

Quality Standard 4: Care of Patients with Neurotoxic Envenomation	
<b>1. Statement</b>	All snake bite patients presenting with neuroparalytic symptoms are immediately admitted to ICU or referred to higher facility with ICU after AN Injection
<b>2. Rationale</b>	Neuroparalytic Snakebite cases presenting can not only be managed with Anti snake Venom therapy. They will require intensive monitoring and may requires assisted life support If health facility is havening Intensive care unit with ventilators the patient should be immediately shifted ICU. Primary and secondary health care centers not havening ICU should refer the patient in an advance life support ambulance to the higher center immediately after giving Atropine – Neostigmine injection.
<b>3. Quality Measure</b>	
<b>3a. Structure</b>	Evidence of functional Intensive Care unit with facility of mechanical ventilators are available at District Hospitals and above level of facilities Evidence that emergency department of facilities are equipped with life saving equipment like Oxygen, Laryngoscope and Bag & Mask are available Evidence of life saving emergency drugs e.g. Atropine and Neostigmine are available in facility
<b>3b. Process</b>	Proportion of neuroparalytic snakebite cases referred to ICU/Higher facility out of total neuroparalytic cases received <b>Numerator-</b> Total no of neuroparalytic cases referred immediately (not more than 30 minutes ) of receiving the patients <b>Denominator-</b> Total no. of neuroparalytic snakebite cases attended Proportion of neuroparalytic snake bite cases given AN injection before refereeing to higher center <b>Numerator-</b> Total no. of cases AN (Atropine- Neostigmine) injection was administered before referring the patient <b>Denominator</b> – Total no. of neuroparalytic snakebite cases attended
<b>4. What Quality Measure means for each audience</b>	<b>Service Provider</b> – Ensure timely shifting / referral of cases requires intensive care. Ensure that AN injection is given before referral <b>Health Administrators/ QA Officials</b> – Insure that ICUs are functional at district and above level facilities with mechanical ventilators. Emergency drugs and referral transport is available. <b>Patient and Community</b> – Cooperate and support the care providers in arranging the ambulance and referral of patient.
<b>5. Data Source</b>	Clinical Case records/ Bed Head Tickets of the sake bite cases Handover registers, Ambulance records

Quality Standard 4: Care of Patients with Neurotoxic Envenomation	
<b>6. Definitions</b>	<b>AN injection</b> – Atropine 0.6 mg followed by neostigmine (1.5mg) to be given IV stat before referral
<b>Quality Standard-5 - Adequate dose of anti snake venom</b>	
<b>Statement</b>	All patients with confirmed diagnosis of snakebite are administered 10 vials of polyvalent ASV over 30 min
<b>Rationale</b>	Adequate and timely administration of ASV is key to successful management of snakebite. Irrespective of type of snake or sign and symptoms, 10 vials of ASV must be given over 30 minutes through IV infusion. Later doses will depend upon type of venom (Vasculotoxic or Neurotoxic) and extent of envenomation. Incomplete dose should never be given
<b>Quality Measure</b>	
<b>3a. Structure</b>	Evidence of adequate stock of ASV is readily available for use and clinical staff is trained for dosages of ASV therapy
<b>3b. Process</b>	Proportion confirmed snake bite cases given at least 10 vials of ASV over 30 minutes out of total snakebite cases treated.  <b>Numerator-</b> Total no of confirmed snakebite patients initially given at least 10 vial of anti snake venom over 30 minutes  <b>Denominator-</b> Total no. of confirmed snakebite cases attended
<b>3c. Outcome</b>	Proportion of snake bite cases successfully treated out of total snake bite cases attended  <b>Numerator</b> - Total no. confirmed snake bite cases successfully treated  <b>Denominator</b> - Total no. of confirmed snake bite cases attended
<b>What Quality Measure means for each audience</b>	<b>Service Provider</b> – Ensure that adequate stock of ASV is readily available. Protocol regarding the initial dosages of ASV is communicated and practiced.  <b>Health Administrators/ QA Officials</b> - Monitor the related indicators. Periodic review of case records (Clinical Audit)  <b>Patient and Community</b> – Insist on initiation of ASV therapy once diagnosis is confirmed. Community representative in rogi kalyan samities can periodically monitor the availability of anti snake venom in the hospital.
<b>Data Source</b>	Clinical Case records/ Bed Head Tickets of the snake bite cases Clinical Audit Records
<b>Definitions</b>	<b>Anti snake Venom Therapy</b> – Intravenous infusion of Polyvalent / Snake specific Anti snake venom with minimum dose of 100 ml.

<b>Quality Standard 5: Atropine Neostigmine Therapy for Neurotoxic Envenomation</b>	
<b>1. Statement</b>	All patients with presentation of Neurotoxic (neuromuscular) Envenomation are provided AN (Atropine-Neostigmine) therapy as per schedule
<b>2. Rationale</b>	Neuromuscular Snakebite must be managed with AN therapy along with ASV. The dosages of AN therapy should be given as per guidelines for recovery of patients .
<b>3. Quality Measure</b>	
<b>3a. Structure</b>	Evidence of availability of Atropine and Neostigmine and clinical staff is skilled for AN therapy
<b>3b. Process</b>	Proportion of neuromuscular snake bite cases given complete AN therapy as per protocol Numerator- Total no. of neuromuscular snake bite cases given complete AN therapy Denominator – Total no. of neuromuscular snakebite cases attended
<b>4. What Quality Measure means for each audience</b>	Service Provider – Ensure AN therapy is given as per protocol. Health Administrators/ QA Officials – Ensure drugs and consumable are available and protocols followed.
<b>5. Data Source</b>	Clinical Case records/ Bed Head Tickets of the snake bite cases Handover registers, Ambulance records
<b>6. Definitions</b>	AN Therapy - Atropine 0.6 mg followed by neostigmine (1.5mg) to be given IV stat and repeat dose of neostigmine 0.5 mg every 30 minutes for 5 doses. Thereafter to be given as tapering dose at 1 hour, 2 hour, 6 hours and 12 hour

Quality Standard 6: Anti snake Venom Availability	
<b>1. Statement</b>	24X7 Availability of Anti snake venom is ensured in designated health care facilities.
<b>2. Rationale</b>	Anti snake Venom is the only specific treatment for snake bite and saving life snake patients is directly linked for swift and adequate access to ASV. Indian Public Health Standards mandates availability of Lyophilized Polyvalent Anti snake Venom at Primary Health Centers and above level of facilities.
<b>3. Quality Measure</b>	
<b>3a. Structure</b>	Total no. of Stock out Days for Anti snake Venom (No . of days when ASV was not available added for month)
<b>3b. Outcome</b>	Proportion of patients denied treatment due to non availability of ASV <b>Numerator-</b> No. of Patients were denied treatment / referred to higher facility because of non availability / in adequate quantity of Anti snake venom <b>Denominator -</b> Total no. of suspected snake bite cases received in the facility
<b>4. What Quality Measure means for each audience</b>	<b>Service Provider</b> – Ensure that adequate stock of anti snake venom is always maintained at the facility. The optimal stock should take in account of usual case load and time taken to replenish the stock. Health Administrators/QA Officials – Ensure that ASV is part of essential drug list. Availability of ASV is regularly monitored. <b>Patient/Community</b> - Be aware of the facilities those have provision for Anti Snake Venom. Community representatives in Rogi Kaylan Samities should monitor the availability of ASV in concerned facility.
<b>5. Data Source</b>	Emergency Register, Case Records Drug Stock Register
<b>6. Definitions</b>	<b>Primary Health Center-</b> A health facility primary level of preventive , promotive and curative care to a population of around 25000. 24X7 PHCs usually have 6 bed indoor facility and can perform minor procedures.

## Quality Standard 7: ASV Reaction

<b>1. Statement</b>	ASV reactions are prevented /managed as per protocol.
<b>2. Rationale</b>	20-60% of patients on ASV therapy may develop early or late reaction and rarely may manifest into life threatening anaphylaxis reaction. Some of these reactions may be prevented by avoiding unnecessary administration of ASV and use of aseptic precautions. Some of the reaction will still due ingredient and impurity in the ASV. These reactions should be managed by administration of drugs like Epinephrine and Chlorpheniramine Maleate
<b>3. Quality Measure</b>	
<b>3a. Structure</b>	Evidence that Drugs for treating ASV Reactions are available at designated facility for ASV therapy.  Evidence that clinical staff has been trained for preventing and managing ASV reactions.
<b>3b. Process</b>	Proportion of ASV reactions treated with Epinephrine / Chlorpheniramine out of total ASV Reaction  <b>Numerator</b> – No. of patients with ASV Reactions (Early or Late ) treated with Epinephrine (0.5mg ) and Chlorpheniramine (10mg)  <b>Denominator</b> – Total no. of snake bite cases presented early or late ASV reaction
<b>3c. Outcome</b>	Proportion of patients developed ASV reactions out of total no. of total no. of patients provided ASV therapy  <b>Numerator</b> - Total no. of snakebite cases developed ASV reaction  <b>Denominator</b> - Total no. of patients provided ASV therapy
<b>4. What Quality Measure means for each audience</b>	<b>Service Provider</b> – Ensure that required drugs are available and clinical staff have been trained for managing ASV reactions  <b>Health Administrators/ QA Officials</b> – Monitor the reaction and find out the root cause. Give feed back to ASV manufacturers and service providers  <b>Patient/ Community</b> - Do not insist for ASV therapy if sign and symptoms of envenomation are not confirmed by clinician
<b>5. Data Source</b>	Patients clinical records  Adverse Drug Reactions (ADR) records
<b>6. Definitions</b>	<b>ASV Reaction</b> – Any major or minor reaction occurred due to hypersensitivity to one of the ingredient of ASV, impurity in the drug, contamination or due to unnecessary administration of ASV.

Quality Standard 8: Staff Skills & Competence for Management of Snakebite	
<b>1. Statement</b>	Health care provider is competent and confident to manage snakebite cases
<b>2. Rationale</b>	Snake bite is a medical emergency requires prompt and skilled clinical intervention to save the life of victim. As most of the snakebite cases happen in rural area the skills required to manage such cases should be available at first point of care may be a Primary or Community Health Center.
<b>3. Quality Measure</b>	
<b>3a. Structure</b>	Evidence that formal training has been provided to the medical officers for management of snake bite cases  Evidence that updated Standard Treatment Guidelines/Protocols are available with clinical care staff
<b>3b. Outcome</b>	Proportion of patients referred to higher facilities because of lack skills/ confidence in treating snakebite cases .  <b>Numerator-</b> Total no. of snakebite referred to higher facilities because of lack skills/ confidence in treating snakebite cases .  <b>Denominator -</b> Total no. of suspected snake received in facility.
<b>4. What Quality Measure means for each audience</b>	<b>Service Provider</b> – Ensure that clinical care staff is training and STG on management of snakebite is readily available  <b>Health Administrators/ QA Officials</b> – Conduct periodic skill assessment of the Medical officers and arrange for their trainings  Publish and Distribute the guidelines on snake bite to all stakeholders
<b>5. Data Source</b>	Training Records  Referral Register
<b>6. Definitions</b>	



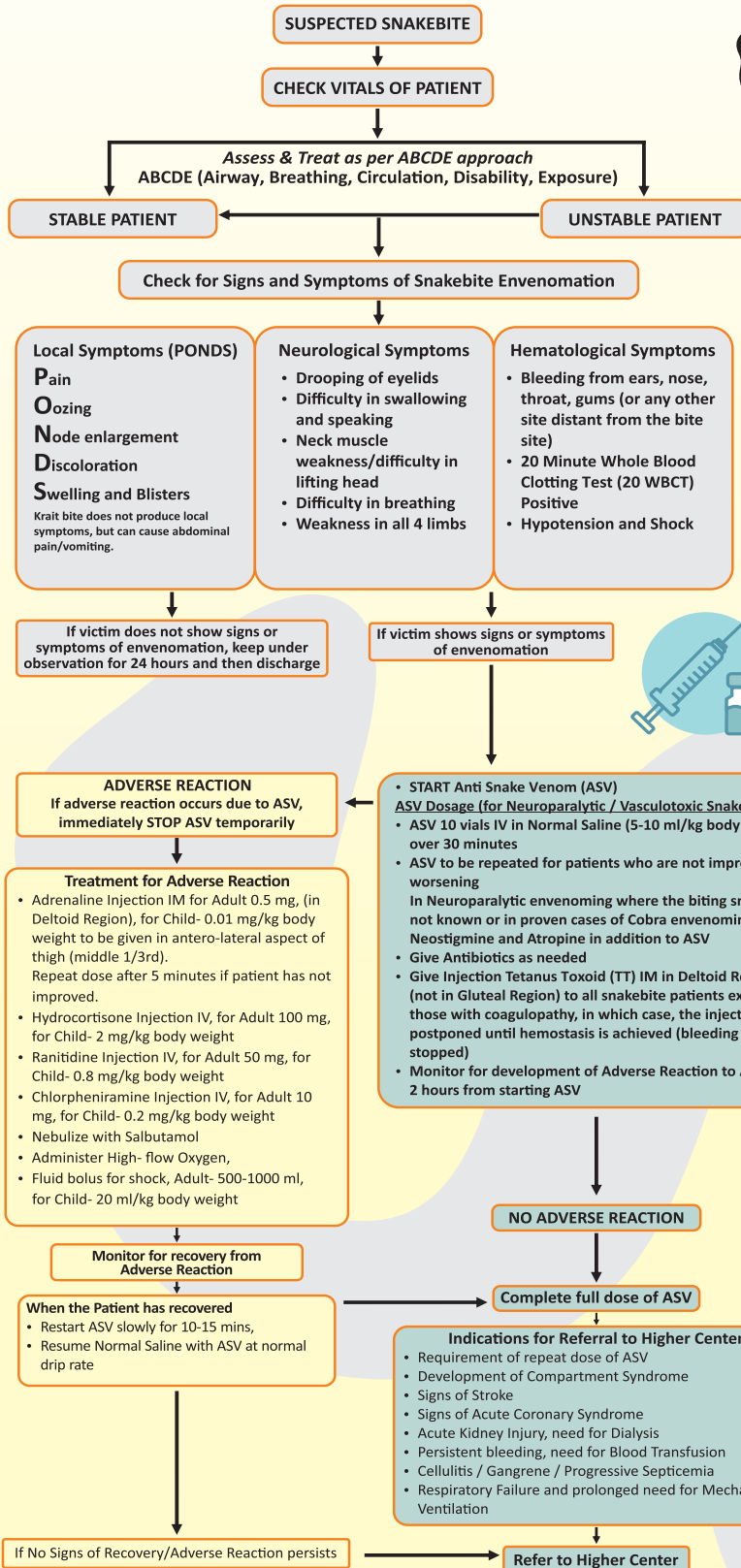
Quality Standard 9: Promotion of Scientific Management of Snakebite in community	
<b>1. Statement</b>	Health facility promotes the information and education regarding scientific management of snakebite in community
<b>2. Rationale</b>	There are several myths and traditional methods of managing snakebite prevalent in different part of India eg. Tying tourniquets, scarification, Ojha etc. None of this method are clinically proven effective. Due misbelieves and lack of information many of the victim still indulge these remedies which leads wastage of precious time and poor prognosis. Public Health system and service providers should educate the community regarding how to prevent snakebites as well as do's and don'ts incase of snake bite.
<b>3. Quality Measure</b>	
<b>3a. Structure</b>	Evidence that IEC material has been displayed at health facilities and public places regarding prevention and first aid in case of snake bite specially in endemic areas.
<b>3b. Outcome</b>	Proportion of snakebite patients attended, those have already gone through some traditional therapy or malpractice like trying tourniquets before reaching health care facility  <b>Numerator-</b> Total no. snakebite patients received traditional remedy before reaching the healthcare facility  <b>Denominator</b> - Total no. of Snakebite patients attended at Facility
<b>4. What Quality Measure means for each audience</b>	<b>Service Provider</b> – Promote health education on snakebite to patients and visitors in hospital through IEC display and counseling.  <b>Health Administrators/ QA Officials</b> – Plan and implement health campaigns on prevention of snakebite and first aid.  <b>Patients &amp; Community</b> – Understand do's and don'ts in case of snakebite.  Follow the preventive measures to avoid snakebites such avoiding sleeping on floor, open defecation, confronting with snake etc.
<b>5. Data Source</b>	Community and Health Care facility survey
<b>6. Definitions</b>	<b>IEC</b> – Information, Education and Communication



# PROTOCOL FOR INITIAL MANAGEMENT OF SNAKEBITE AT HEALTH FACILITIES (PHC/CHC)

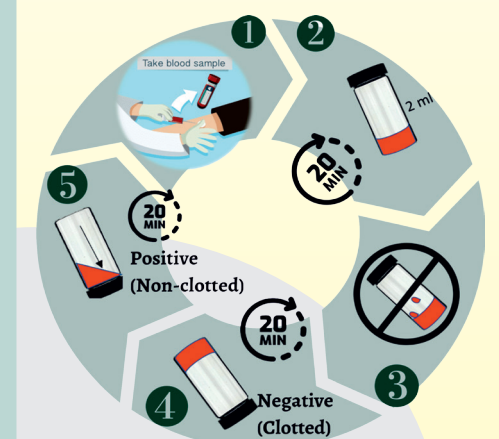


Download Document using QR Code



For details, refer to Standard Treatment Guidelines for Management of Snakebite

## 20 Minute Whole Blood Clotting Test (20 WBCT)



- 1 Take 1-2 milliliters of venous blood in a clean, dry glass bottle or vial
- 2 Allow to stand at room temperature for 20 minutes
- 3 Leave undisturbed
- 4 Tip and record the presence or absence of a complete clot
- 5 If no clot forms and the blood remains liquid, the test result is positive

In case where the 20WBCT result is inconsistent with the patient's clinical condition, repeat the test in duplicate, including a "control" (blood from a healthy person).

20 WBCT may remain negative in patients with evolving "Venom-induced consumption coagulopathy" (VICC), therefore, the patient should be re-tested hourly for the first 3 hours and then 6 hourly for 24 hours until either test result is not clotted or clinical evidence of envenomation to ascertain if dose of ASV is indicated



MINISTRY OF HEALTH AND FAMILY WELFARE  
Government of India  
Nirman Bhawan, New Delhi

