



Ministry of  
Health & Family Welfare  
Government of India

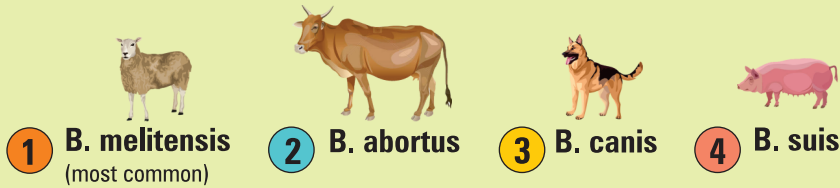
# Brucellosis

## WHAT WE NEED TO KNOW ABOUT BRUCELLOSIS

- Brucellosis is a Zoonotic Disease that affects both humans and animals
- Also known as “**Undulant fever**” or “**Malta fever**”

- Caused by gram-negative intracellular aerobic cocobacilli
- Humans can get infection from Cattle, Buffalo, Sheep, Goats, Pigs & Dogs

### Mainly four types of species in which Brucellosis found in India



### Brucellosis is commonly undiagnosed & needs attention!!!

- Leads to high economic loss to dairy farmers and livestock producers
- Results in chronic debilitating illness in humans often leading to complications

### How do humans get infected?

- Ingestion of raw, unpasteurized milk & its products
- Inhalation of Infectious Aerosols
- Direct Contact with infected animal's birth products
- Blood Transfusion

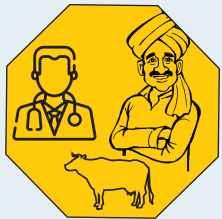
### How do animals get infected?

- Through close contact with infected animal
- By breeding/mating with infected animal
- Contact with infected animal's birth products
- Consumption of contaminated fodder
- Nursing of young animals from an infected female animal

## When to suspect Brucellosis?



H/O eating raw  
dairy products



H/O Occupational exposure  
(Veterinarians, Dairy Farmers,  
Abattoir Workers, Livestock Handlers)



Fever  
accompanied  
by  
anorexia and  
back pain  
(undulant fever)



Headache,  
night sweats,  
rashes,  
poor appetite  
and weight loss



Leucopenia,  
enlargement  
of liver,  
spleen and  
lymph nodes



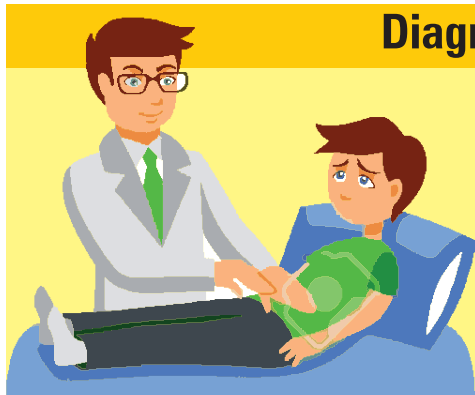
Respiratory  
tract  
complication



Joint pains  
and  
swelling

## Always Rule Out Brucellosis in cases of Pyrexia of Unknown Origin associated with Joint Pains

### Diagnosis



1. ELISA
2. PCR
3. Bacterial Culture  
(Gold standard)

### Treatment



Doxycycline 100 mg BD for 6 weeks  
or  
Doxycycline 100 mg (6 weeks)  
+ Streptomycin 1gm Day I.M (3 weeks)  
**OBSERVE FOR RELAPSE**

## How to prevent Brucellosis?

### In Humans



Do not eat  
or consume raw  
dairy products



Always wash  
your hands after  
handling animals



Wear protective  
clothing during  
disposal  
of animal waste/  
biological waste



Wear protective clothing  
when handling reproductive  
tissues (delivery of animals)  
and during per rectal  
examination and Artificial  
Insemination of animals

### In Animals



Separate sick animals from the  
healthy animals



Mandatory Brucella  
vaccination of  
female calves



Avoiding breeding  
or sick animals



[www.mohfw.nic.in](http://www.mohfw.nic.in)  
[www.mygov.in](http://www.mygov.in)  
[www.pmindia.gov.in](http://www.pmindia.gov.in)

For more information, visit the nearest Health Centre.

YouTube [@mohfwindia](https://www.youtube.com/mohfwindia)  
Twitter [@MoHFW\\_INDIA](https://twitter.com/MoHFW_INDIA)

<http://ncdc.gov.in/>  
Twitter [@director\\_NCDC](https://twitter.com/director_NCDC)



National One Health Program for Prevention & Control of Zoonoses