



SectorConnect:

Enhancing Preparedness for Integrated Response

Brochure for

**Field Epidemiology Programme in One Health
(FEP OH) Short Course**

Initiative by

**National Centre for
Disease Control, Delhi**

and

**Department of Animal
Husbandry and Dairying**

In collaboration with

Human Health Sector

- Indian Council of Medical Research
- Medical Academia

Animal Health Sector

- ICAR HQ & Institutions (NIVEDI, IVRI, NIHSAD, RDLs)
- Veterinary Academia

Environment, Wildlife & Food Safety Sector

- Wildlife institutions
- Central Zoo Authority
- FSSAI

International Partners

- World Health Organization (WHO), India Office
- Centre for Disease Control & Prevention (CDC), India
- World Organization for Animal Health (previously OIE)
- Food and Agriculture Organization (FAO)



Need for Joint Risk Assessment and Outbreak Management

Changes to the environment, production systems, and human societies are rapidly modifying interactions between humans, animals, and ecosystems. These have led to spillover of pathogens (Figure 1) and complex health crises such as zoonotic diseases, emerging and re-emerging infectious diseases, anti-microbial resistance and climate change.

These have resulted in wide ranging impacts to health, economies, and development progress, and in many cases disproportionately impacting the most vulnerable, and often leading to their exclusion from pandemic preparation, response and recovery measures.

Coordination between human, animal and environmental health services can avoid duplication of tasks, prioritize interventions, and select the most cost-effective options to address cross-sectoral issues (Figure 2).

A multi-sectoral coordinated approach for any project leads to -



Reduced duplication of costs



Reduced disease burden and associated costs



Reduced environmental damages



Increased co-benefits across sectors

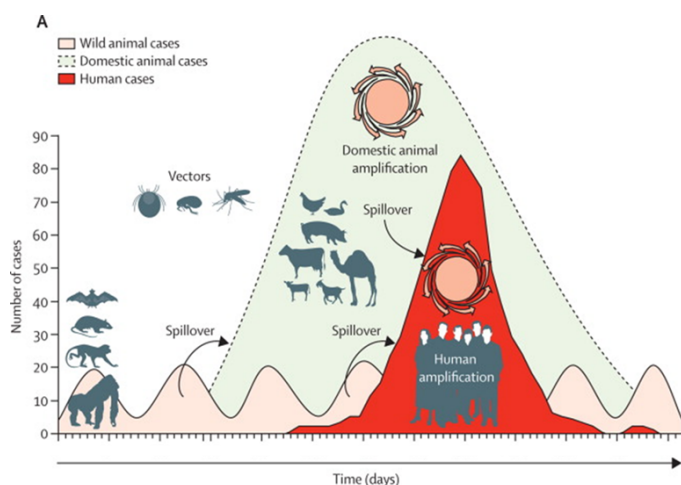


Fig. A: Spillover of pathogens from wildlife to domestic animals, and finally humans cause increase disease burden across all sectors (1)

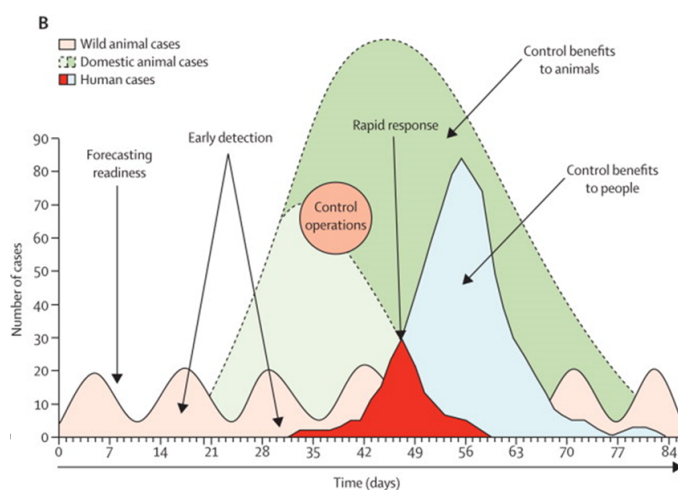


Fig. B: Early detection using One Health leads to effective control, and reduces disease burden & associated costs across all sectors (1)

1. Karesh WB, Dobson A, Lloyd-Smith JO, Lubroth J, Dixon MA, Bennett M, Aldrich S, Harrington T, Formenty P, Loh EH, Machalaba CC. Ecology of zoonoses: natural and unnatural histories. The Lancet. 2012 Dec 1;380(9857):1936-45.

SectorConnect

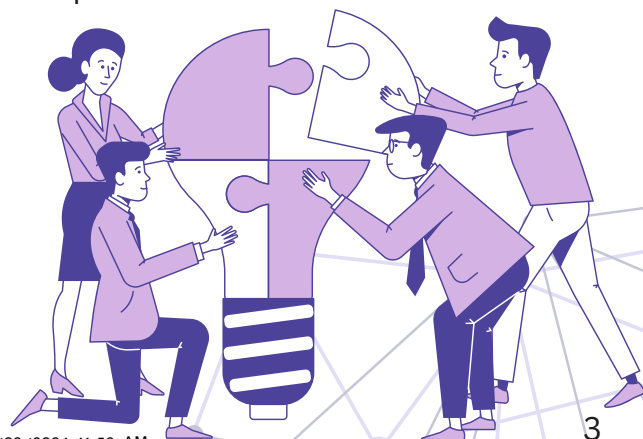
- SectorConnect is a Field Epidemiology Programme (FEP) in One Health, designed for professionals across various sectors to build preparedness for integrated response
- **FEP OH Short Course** is a 3 months (12 weeks) on-the-job training where officers will learn by carrying out field activities under mentorship of experts
- Trainee officers will participate in the contact sessions per the calendar, followed by completion of core activities of learning at their respective duty stations

Goal

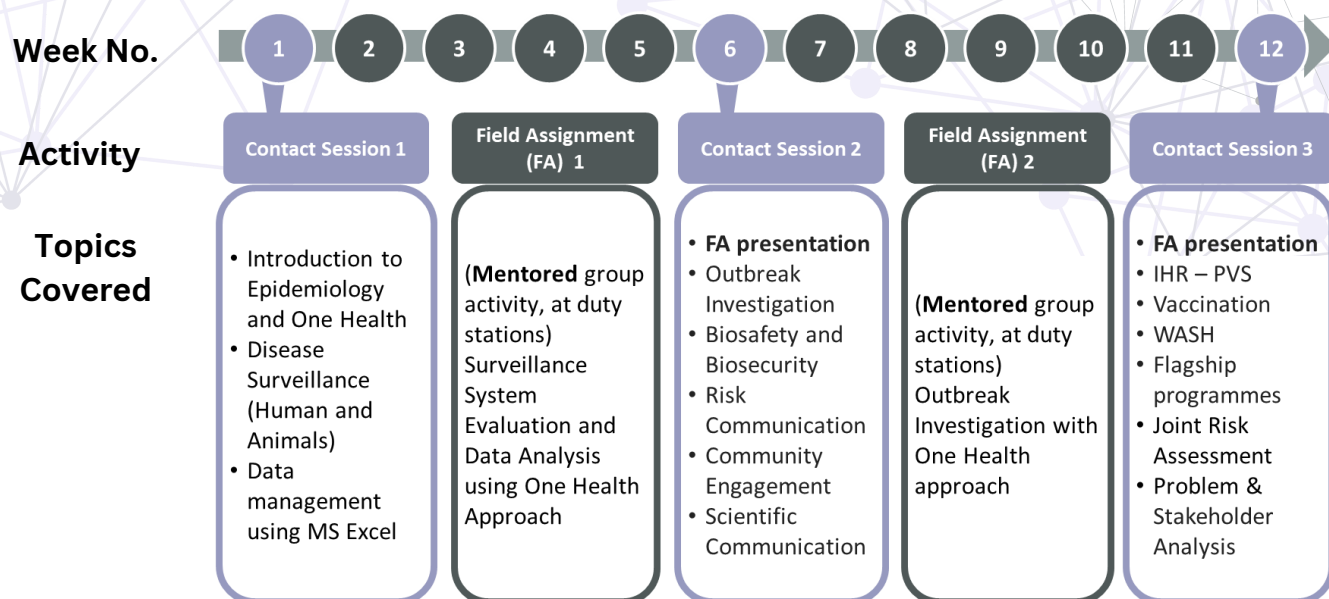
Building a network and capacity of professionals across the human, animal and environmental health sectors to enable integrated response at field level across all sectors.

Objectives

- Strengthen the system's capacity to respond to public health threats through multi-sectoral collaborative approach.
- Enhance inter-sectoral coordination and cross learning.
- Enhance the epidemiological skills for joint risk assessment and outbreak investigation of the state, district, and field level officers across various sectors.
- Enable sharing of information across sectors for identification and response to early warning signals.
- Enhance skills for evidence-based decision-making, effective communication, and transformational leadership.
- Build a sustainable network of trained professionals across sectors for continued collaborative efforts to tackle issues of public health importance.

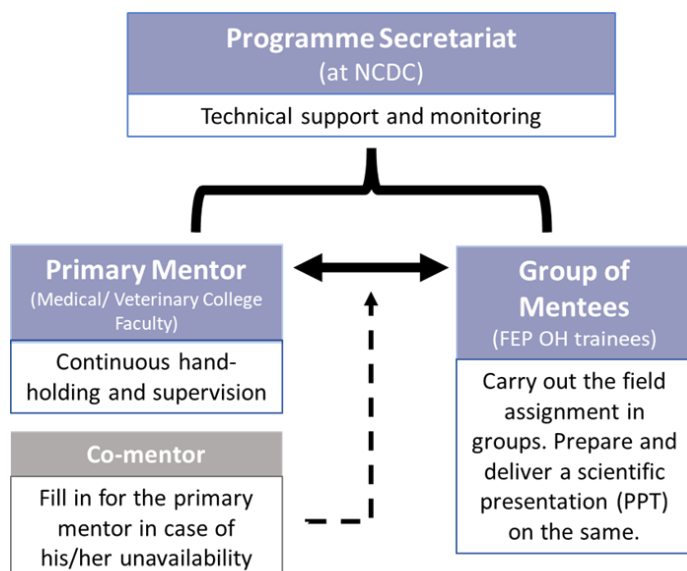


Program Overview



Andragogy

Interactive contact sessions comprising of didactic sessions, case studies and hands-on learning and field assignments under mentorship of experts -



Eligibility

Officers working at the State health and public health departments: animal husbandry & dairying, FSSAI, wildlife, airport & seaport authority, veterinary & medical universities, water & sanitation and other related departments can apply.



Contact Us



sectorconnect-india@ncdc.gov.in,
sectorconnectindia@gmail.com



Division of Public Health Preparedness & NCD,
National Centre for Disease Control,
22, Sharnath Marg, Delhi - 54